



Installation Description

OrgPublisher™ for SAP® solutions:

OrgPublisher SAP Interface

Version 7.0

Trademarks

SAP, mySAP, and R/3 are trademarks and/or registered trademarks of SAP AG in Germany and in other countries.

OrgPublisher® is a trademark of PeopleFluent® in the USA and in other countries.

PeopleFluent and the PeopleFluent and OrgPublisher logos are trademarks and/or registered trademarks of PeopleFluent. All other brand names and product names are trademarks and/or registered trademarks of the respective owners.

Microsoft®, Windows®, Windows® 95, Windows® 98, Windows NT®, Windows® 2000, Windows® XP, and Visual Basic® are registered trademarks of the Microsoft Corporation.

Netscape® and Netscape N and Ship's Wheel Logos are registered trade brands of Netscape Communications Corporation in the United States of America and in other countries.

Novell® is a registered trademark of Novell, Inc. in the USA and in other countries. Oracle® is a registered trademark of the Oracle Corporation.

HTML, DHTML, XML, XHTML are trademarks or registered trademarks of W3C®, World Wide Web Consortium, Massachusetts Institute of Technology.

Copyright

Copyright 2016, PeopleFluent. All rights reserved by PeopleFluent® and Accenture GmbH.
Proprietary and confidential.

Whilst every effort has been made to ensure the accuracy of the texts and illustrations in the product documentation, complete accuracy cannot be guaranteed. We welcome suggestions for improving the product documentation and/or information on potential errors.

Support

If you have questions on your application or on importing files, please contact our Support Center. You can contact the Support Center every working day by e-mail at orgpub.support@peoplefluent.com (Please write in English, if possible.)

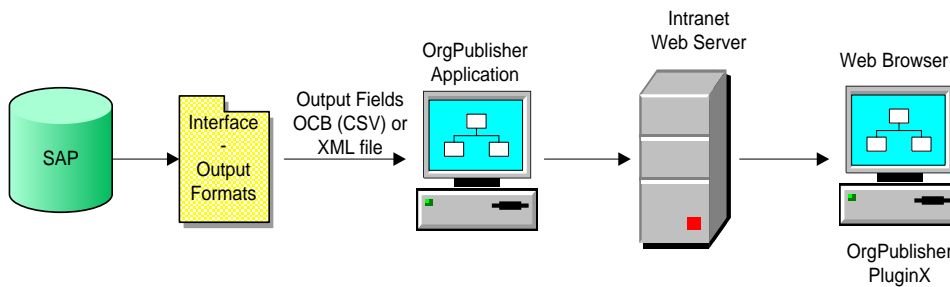
Contents

1	Overview of OrgPublisher™ for SAP® Solutions	5
2	Release Information.....	6
2.1	Release Information for Version 7.0	6
2.1.1	Installation.....	6
2.1.2	SAP HANA Database	6
2.1.3	Calling OrgPublisher from HR Renewal	6
2.1.4	New Standard Output Format “/EHR/UFL_B”	6
2.1.5	New User Exits in the Standard Module Pool	6
2.2	Release Information for Version 6.1	6
2.2.1	Installation.....	6
2.2.2	New Standard Output Format “/EHR/UFL”	6
2.2.3	Correction: Download from SAP System Started Remaining OrgPub32.exe Process in the Memory	7
2.3	Release Information for Version 6.0	7
3	Installation	9
3.1	General Procedure	9
3.2	Storing Files on the SAP Application Server.....	9
3.3	Installing Software Components.....	9
3.4	Checking the Version.....	9
4	Postprocessing	11
4.1	Merging Customizing from Client 000	11
4.2	Additional Module: Real-Time Extension.....	12
4.2.1	Define Web Service Connection.....	12
4.2.2	Web Dynpro ABAP (WDA)	14
4.2.3	Integration in SAP Enterprise Portal.....	14
5	Product Activation	17
5.1	Overview.....	17
5.2	Introduction.....	17
5.2.1	General License Activation Process.....	17
5.2.2	The <i>Software License Cockpit</i> in a Distributed System Landscape.....	18

5.3	Required Authorizations	18
5.4	Starting the Software License Cockpit	18
5.5	The Main Menu	18
5.6	Displaying Existing Licenses	19
5.7	Requesting New Licenses	20
5.7.1	Selecting a Product	20
5.7.2	Entering Contact Details	20
5.7.3	Listing the System Data.....	20
5.7.4	Reading System Data from a Remote System.....	21
5.7.5	Downloading a License Request to your Local PC	21
5.7.6	Sending the License Request.....	22
5.8	Importing and Installing Licenses	24
5.8.1	Importing the License Data.....	24
5.8.2	Installing the Licenses	24
6	Appendix	26
6.1	Authorizations	26
6.2	Web Enabling WebAS – Prerequisites (for “Real-Time Extension” only)	27

1 Overview of OrgPublisher™ for SAP® Solutions

OrgPublisher SAP Interface provides you with a powerful tool for extracting data from your SAP system and displaying it graphically. OrgPublisher SAP Interface generates ocb files based on *output formats* (in csv format: Comma Separated Value) or XML files. Sample formats are also provided, which you can use directly for the download. You can adapt these sample formats to your own requirements using *Wizards (Assistants)* with very little effort. Knowledge of Customizing is not required. You only need to extend the Customizing tables for the output formats afterwards in the case of special requirements.



Overview of OrgPublisher™ for SAP® solutions

The data for the organizational chart is then available as an ocb file with the data export from SAP. In the next step, the organizational charts are formatted in OrgPublisher and a second file with the same file name (otm format) is generated. In the final step, publication, the htm page is generated for the web browser in OrgPublisher.

The entire process can run completely automatically in production operation. You thus ensure that the organizational charts that you offer your executives and your employees – whether on the internet, as PDF documents or as PowerPoint presentations – always correspond to the current data status of SAP HR.

The additional component “OrgPublisher™ for SAP® solutions – Real-Time Extension” is offered as an option and is based on “OrgPublisher™ for SAP® solutions”. You need a separate license for this. Using Real-Time Extension, data is taken from SAP in real time, which means you can download the data from a web application such as SAP Enterprise Portal or “Accenture HR Management Suite” in real time from the SAP backend and display it in the organizational chart. This is done taking account of SAP authorizations without any additional effort. However, the online functionality can also be used for data download in the SAP GUI or in PPOME as an alternative to the existing solution. The advantage at this point is that local installation of OrgPublisher is not required.

2 Release Information

2.1 Release Information for Version 7.0

2.1.1 Installation

In version 7.0, the installation process has now moved to the more modern Add-On Assembly Kit (AAK). You now install **OrgPublisher SAP Interface** using SAR files via transaction SAINT, instead of using transport files, as was previously the case.

2.1.2 SAP HANA Database

The **OrgPublisher SAP Interface** is compatible to SAP HANA database.

2.1.3 Calling OrgPublisher from HR Renewal

You can now also call *OrgPublisher™* from *HR Renewal*, similarly to in PPOME. For more information, see section 5 *Calling OrgPublisher in HR Renewal* in the Functional Description.

2.1.4 New Standard Output Format “/EHR/UFL_B”

As of version 11.9, predefined reports are available in *OrgPublisher™*, which you can use to easily create charts, organizational charts, and so on. These reports are based on the *Universal File Layout (UFL)*, which predefines the input fields. With the new standard output format */EHR/UFL_B Universal File Layout as of 11.9*, you can use the new predefined reports with your SAP data.

2.1.5 New User Exits in the Standard Module Pool

Two new user exits have been added to the standard module pool. User exit GET_PICTURE_URL enables you to export the photo URL from the SAP ArchiveLink. User exit READ_IT41_DATE enables you to evaluate both the date of a particular date type and its age in days, weeks, months, or years.

2.2 Release Information for Version 6.1

2.2.1 Installation

As of version 6.1, installation on SAP R/3 Enterprise (4.7) and mySAP ERP 2004 (5.0) is no longer supported.

For information on installing version 6.1, see chapter 3 Installation.

2.2.2 New Standard Output Format “/EHR/UFL”

As of version 11, predefined reports are available in *OrgPublisher™*, which you can use to easily create charts, organizational charts, and so on. These reports are based on the “Universal File Layout”

(UFL), which predefines the input fields. If an output format matches the UFL, you can use the predefined reports with your SAP data.

Note: The predefined reports are only available in OrgPublisher™ if you are using the Premier version of OrgPublisher™.

You can now use the output format /EHR/UFL for *OrgPublisher™ for SAP® solutions*. This format supports the following data field groups:

- OrgPublisher Standard Fields 1-19
- Common Generic Fields 20-52

This basic version allows you to use most of the predefined reports. However, you can also extend the output format manually in order to use other predefined reports.

2.2.3 Correction: Download from SAP System Started Remaining OrgPub32.exe Process in the Memory

Every time OrgPublisher™ was called directly from the SAP system (e.g. from PPOME), an OrgPub32.exe process was started in the memory, which did not terminate when the OrgPublisher application was closed. As a result, the computer either slowed down or crashed. This release contains a correction for this.

2.3 Release Information for Version 6.0

Changes/Additions to the user Interface

- **Selection of the preferred language when downloading data from SAP**
Previously, you could specify either a language sequence or a fixed language in which to output the data when selecting the languages for the text data. Now you can specify a primary language in which the texts are to be output as a priority. If the primary language does not exist, the system determines the text using the language selection options already available.
- **Selection of a variant of OrgPublisher for call using OrgManagement (PPOM*)**
If you call OrgPublisher using Organizational Management (transaction PPOME and PPOM_OLD), you can now start OrgPublisher using a variant. To do this, you can show the *Variant* additional field in the PPOM* dialog window in Customizing for the basic parameters.
- **Adjustment of the F4 input help for web templates (Real-Time Extension)**
The selection (F4 input help) of web templates now displays the file names of the charts published on the web server. Previously, the OTM files were displayed, but they are not unique in this scenario.

New/Modified functions in Customizing

- **Exclusion of output definitions**

You can now exclude individual output definitions of the output formats from processing by entering “*”. You can use this function in the test phase to avoid the setting of indicators in OrgPublisher, for example.

- **Copying of customer-specific output formats**

In the Wizard for Output Formats you can now also copy customer-specific output formats that were changed in the “Output definitions” table in Customizing. To do this, select the *Special Format* option in the *Define Layout of Boxes* step when copying or changing an output format.

- **Change to the standard output format “/EHR/STAFF”**

In the standard output format /EHR/STAFF, the query for determining the position type <SF> for staff organizational units has been postponed. This now takes place after the general query of position type <ORG> for organizational units without a chief position.

- **Changes to the documentation**

The information listed here in the release information has been added to the Functional Description.

3 Installation

3.1 General Procedure

The installation of *OrgPublisher SAP Interface* consists of two steps:

1. Installation of the software components
2. Merging of Customizing from client 000 and postprocessing

After installing *OrgPublisher SAP Interface*, you must activate it. Refer to section 5 Product Activation for details.

3.2 Storing Files on the SAP Application Server

The files containing the *OrgPublisher SAP Interface* objects are included in the OrgPublisher installation package. After successful installation of OrgPublisher on a server or local workstation, the files are available in the subfolder SAP of the OrgPublisher directory (default file path C:\Program Files (x86)\OrgPubX where X represents the OrgPublisher version number).

- Load the SAR files to the SAP server via transaction SAINT -> Installation Package -> Load Packages -> From Front End.

3.3 Installing Software Components

OrgPublisher SAP Interface must be installed with all software components using the SAP Add-On Installation Tool (transaction SAINT). Minimum requirement is SAINT/SPAM installation level 0060. Install the software components in the following sequence:

#	Software component	Release	Description
1	EHLCCPT	175	Software License Cockpit
2	EHRBASIS	703	Basis Components
3	ORGPUB	700	OrgPublisher SAP Interface
4 (optional)	ORGPUBRT	200	OrgPublisher SAP Interface – Real-Time Extension

As a result of the import conditions that are set within the software components, you can also start automatic installation of all components at once in the Add-On Installation Tool.

3.4 Checking the Version

If you want to check which version and/or patches you have currently imported, choose *Application -> Version* in the program menu or use transaction /EHR/SOL71_ORGPUB. You can display further technical details by choosing *Status*.

You can also call up this function separately by choosing *Application -> Status* in the menu. The information also makes it easier for our Support Center to help you more quickly when answering your questions.



Installation Description

OrgPublisher™ for SAP® solutions: SAP Interface Version 7.0

OrgPublisher for SAP solutions - Version

Release: 7.0.0 (Realtime Extension 2.0.0)
Release date: 29.07.2016

System information

HR Release: 604
SAP Release: 740
Operating system: Windows NT
Database: MSSQL
SAPGUI Release: 7400 9

Checkmark and help icons at the bottom right.

OrgPublisher for SAP solutions - Version

Download

OrgPublisher for SAP solutions - Display of Release Information

Status Determination for OrgPublisher for SAP Solutions

You can save the following list in a local file and then send it to Support

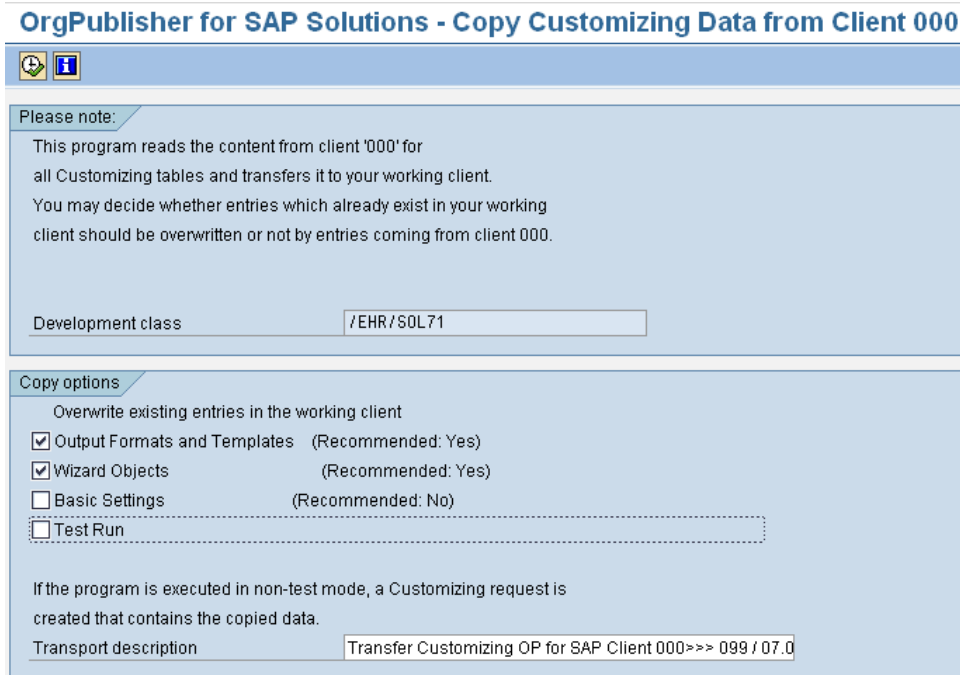
System date: 29.07.2016
Installed version: 7.0.0 (Realtime Extension 2.0.0)
Release date: 29.07.2016
System: 267
Client: 000

4 Postprocessing

4.1 Merging Customizing from Client 000

Program /EHR/SOL71_CUST merges the Customizing entries from client 000 with the working client.

1. Start the report using transaction SA38, for example.



The screenshot shows the SAP dialog box titled "OrgPublisher for SAP Solutions - Copy Customizing Data from Client 000". It contains a "Please note:" section with instructions, a "Development class" field with the value "/EHR/SOL71", a "Copy options" section with checkboxes for "Output Formats and Templates", "Wizard Objects", "Basic Settings", and "Test Run", and a "Transport description" field with the value "Transfer Customizing OP for SAP Client 000>>> 099 / 07.0".

OrgPublisher for SAP Solutions - Copy Customizing Data from Client 000

Please note:
This program reads the content from client '000' for all Customizing tables and transfers it to your working client. You may decide whether entries which already exist in your working client should be overwritten or not by entries coming from client 000.

Development class: /EHR/SOL71

Copy options
Overwrite existing entries in the working client

- Output Formats and Templates (Recommended: Yes)
- Wizard Objects (Recommended: Yes)
- Basic Settings (Recommended: No)
- Test Run

If the program is executed in non-test mode, a Customizing request is created that contains the copied data.

Transport description: Transfer Customizing OP for SAP Client 000>>> 099 / 07.0

2. Do not change the other options from the recommended settings. Make sure that "Test run" is set to **No**.
3. Execute the program.
4. Post the copied entries to a Customizing request. Select the request in this query. You can now also create a new request.
5. You can find the number of records copied for each table under the working client number.

OrgPublisher for SAP Solutions - Copy Customizing Data from Client 000

OrgPublisher for SAP Solutions - Copy Customizing Data from Client 000				
T E S T M O D E No data changed on database				
	Record statistics			
Table	Client 000	Client 099	To be copied	Status
/EHR/S71_T778L	0	0	0	Test
Output Formats and Templates				
/EHR/S71T_COMM	36	70	36	Test
/EHR/S71T_FORMAT	25	74	25	Test
/EHR/S71T_INFOR	0	1	0	Test
/EHR/S71T_OBJ	66	105	66	Test
/EHR/S71T_OUTP	786	1.826	786	Test
/EHR/S71T_TAGN	1.005	1.206	1.005	Test
/EHR/S71_DOWN	222	930	222	Test

4.2 Additional Module: Real-Time Extension

The following configurations are only required if you have licensed the “Real-Time Extension” additional module. This module is not covered by a test license.

In addition to the SAP software components, you need an “Installer” (exe file) for the web server. Additional documentation “*OrgPublisher Real-time Overview.pdf*” is available on this, which is included in the installation package.

4.2.1 Define Web Service Connection

You use this activity to define the connection to the web service in SAP. To do this, the standard system of Real-Time Extension contains an Enterprise web service and the proxy class /EHR/CO_ORG_PUB_WSSOAP has been installed during the import. This was generated with the help of a WSDL file.

Requirements

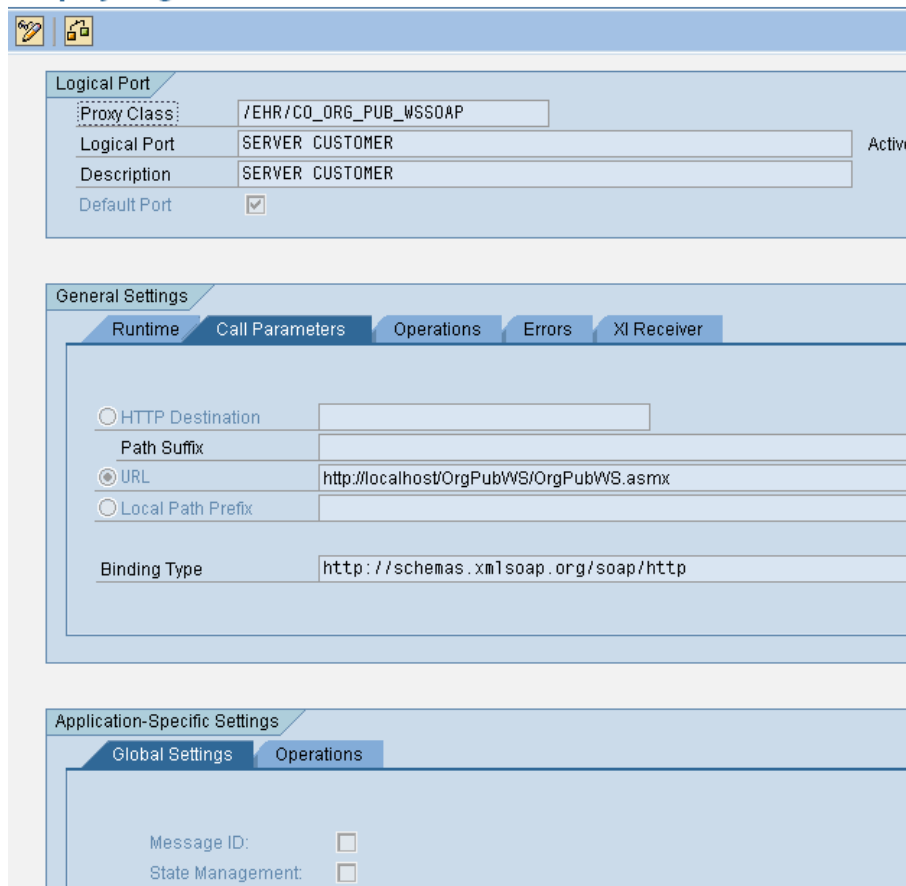
- You have installed the web service. Please see the document “*OrgPublisher Real-time Overview.pdf*” for more information on this.
- In the Implementation Guide of *OrgPublisher™ for SAP® solutions - Real-Time Extension*, you have specified your web server(s) in *Basic Settings -> Web Server*.

Procedure

Ports are used to send the data from the SAP system to the web service. Proceed as follows to assign a logical port for the web service client proxy. You must do this for at least one logical port:

1. In the Implementation Guide, call up the activity *Basic Settings -> Maintain Logical Ports*.
2. Enter proxy class /EHR/CO_ORG_PUB_WSSOAP. Do not change this.
3. In the *Logical Port* field, enter one of your web servers. The input help provides you with all web servers that you have already created in Customizing (table /EHR/S71_SERVER).
4. For the first logical port, select the *Default Port* field.
5. Call up the *Call Parameters* tab, and enter the URL. This URL is then used to access the web server; see the document “*OrgPublisher Real-time Overview.pdf*”.
6. If necessary, enter further logical ports.
7. The settings cannot be transported. Therefore repeat this activity in all the systems you use.

Display Logical Port



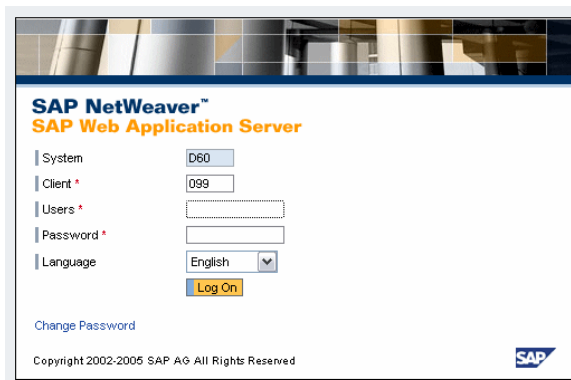
The screenshot shows the SAP configuration interface for a logical port. It is organized into three main sections:

- Logical Port:** Contains fields for Proxy Class (set to /EHR/CO_ORG_PUB_WSSOAP), Logical Port (SERVER CUSTOMER), Description (SERVER CUSTOMER), and a checked Default Port checkbox. An 'Active' status indicator is present on the right.
- General Settings:** Includes tabs for Runtime, Call Parameters, Operations, Errors, and XI Receiver. Under the Call Parameters tab, there are radio buttons for HTTP Destination, URL (selected), and Local Path Prefix. The URL field contains 'http://localhost/OrgPubWS/OrgPubWS.asmx'. The Binding Type field contains 'http://schemas.xmlsoap.org/soap/http'.
- Application-Specific Settings:** Includes tabs for Global Settings and Operations. Under Global Settings, there are checkboxes for Message ID and State Management, both of which are currently unchecked.

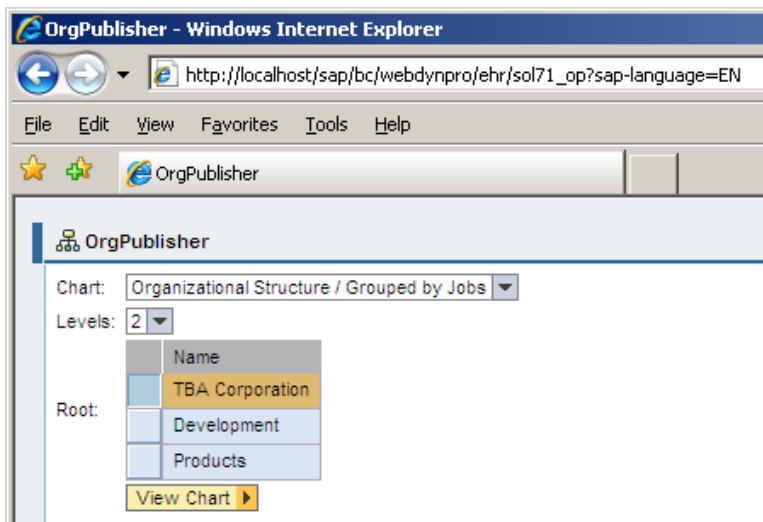
4.2.2 Web Dynpro ABAP (WDA)

When you have imported the transport request, check whether your system meets the requirements for executing web applications:

1. Start transaction SICF, and activate the node **default_host->sap->bc->webdynpro->ehr->sol71_op**.
2. Choose “Test Service” from the context menu (a new Internet Explorer browser window opens displaying the WebAS logon screen):



After logon, the following screen is displayed:



If this does not happen, check whether the requirements are met (see Appendix).

4.2.3 Integration in SAP Enterprise Portal

Before you can use the application, a connection to the web service must be set up on the OrgPublisher web server.

Now create a new portal page containing the application as an iView. Alternatively, if you want to integrate the iView in an existing ESS/MSS, you may need to integrate this in your existing

environment using the “Homepage Framework” Customizing. We will be happy to provide support for this on request.

Steps in system administration

1. Add system alias “ACN_CHARTING”
You should find your HR system under System Administration -> System Configuration and then “Portal Content” (the WebAS on which you imported the transport).
Double-click to display the detailed view.
Choose “System Aliases” in the “Display:” dropdown field.
Add system alias “ACN_CHARTING”.
Maintain property category “Web Application Server (Web AS)”
Choose “Object” in the “Display:” dropdown field.
Choose “Web Application Server (WEB AS)” in the “Property Category:” dropdown field.
Fill at least the following three fields:
Web AS description: Your system ID (e.g. “D60”)
Web AS Hostname: Host name and port (e.g. “myserver.mycompany.com:8000”)
Web AS Protocol: e.g. “http”
2. Assign read authorization
The users must have read authorization for the system.
Choose “System Authorizations” in the “Display:” dropdown field.
Assign “Read” authorization to the required user group or role and select the “User” option (checkbox).

Steps in content administration

1. Create a new folder under “Portal Content”
Example on our system: ACN Home->OrgCharting
ACN Home: ID: acn_home Prefix:com.acn.hcms
OrgCharting: ID: opsap Prefix: <empty>
2. Create an iView in the new folder
 - In the context menu for the new folder, choose “New->iView”
 - Under “Source Type”, choose “iView Template” and “Continue”
 - In “Step 1 – Template Selection”, choose “iView SAP Web Dynpro” and “Continue”
 - In “Step 2 – General Properties”, fill the following fields:
iView-Name: (e.g. “OrgPublisher”. This is the name the user sees)
iView ID: (e.g. iv_opsap)
iView ID Prefix: (e.g. com.yourcompany.yoursubarea)
 - In “Step 3 – Web Dynpro Platform”, choose “Web Dynpro for ABAP” and “Continue”
 - In “Step 4 – Web Dynpro Parameters”, fill the following fields:
System: Choose the alias “ACN_CHARTING” in the dropdown field
Namespace: ehr
Application Name: sol71_op
Web Dynpro Client: Plain HTML

3. Create a role
 - In the context menu for the new folder, choose “New->Role”
 - In “Step 1 – General Properties”, fill the following fields:
Role Name: (e.g. “OrgCharting”. This is the name the user sees) Role ID: e.g. “ro_opsap”
 - Open the role for editing, and choose “Navigation” in the “Property Category” Choose “Yes” under “Entry Point”. The role is then displayed under the selected name in the top menu.
4. Include iView in the new role
Right-click the iView, and choose “Add iView to Role->Delta Link” in the context menu.
5. In user administration, assign the role to the users.

5 Product Activation

Note: If you install a test license, the product is activated automatically for 30 days and 10000 chart objects to be displayed and you can skip this chapter. The test license does not cover the Real-Time Extension.

Before you work with *OrgPublisher SAP Interface* for the first time, you must request a license for the current installation and activate the product once you have received this license. For this, you use the License Cockpit, which is part of the delivery. You access the License Cockpit by clicking “Application -> Licenses...” in the *OrgPublisher SAP Interface* menu (transaction /EHR/SOL71_ORGPUB).

5.1 Overview

The *Software License Cockpit* is the central instrument for managing your *OrgPublisher SAP Interface* licenses. You can use the *Software License Cockpit* to do the following:

- Display the licenses available on your SAP system
- Request new licenses
- Import and install licenses from license files

The *Software License Cockpit* is suitable both for individual systems and for environments with multiple SAP systems. In a multi-system landscape, the *Software License Cockpit* enables you to request new licenses from one central system. The license data sent by the software registration department can then be imported to the central system and distributed to the other systems. This greatly simplifies the license administration process.

5.2 Introduction

5.2.1 General License Activation Process

To activate a license for the *OrgPublisher SAP Interface* solution you have purchased, start the *Software License Cockpit* via the *OrgPublisher SAP Interface* menu (transaction /EHR/SOL71_ORGPUB). You will be guided through all steps for requesting licenses on screen. Upon completing these steps, a license request is created, which you must send to the PeopleFluent software registration department by e-mail. From there, you will receive a response file with your license activation by e-mail, which you can import into your system in a further screen.

A license always refers to the combination of hardware key and SAP system ID. The hardware key is created by the SAP system. If your SAP system always has the same system ID, but runs on changing hardware (e.g. in cluster systems), you can request licenses for all known hardware keys at the same time in one step and save them on your system. The advantage of this is that you do not have to request a new license every time your system's hardware key changes.

You can call up the *Software License Cockpit* from the *OrgPublisher SAP Interface* menu. The text below provides a detailed description of the individual *Software License Cockpit* functions.

5.2.2 The *Software License Cockpit* in a Distributed System Landscape

You can request licenses for *OrgPublisher SAP Interface* from one central system if the SAP system landscape you are using permits this. To manage licenses centrally, RFC connections to all connected systems must be defined on the central system.

However, the *Software License Cockpit* works on all SAP systems independently without a central administration instance. In this case, you must request licenses for each system.

5.3 Required Authorizations

All users can execute the display function.

To install *OrgPublisher SAP Interface* licenses, you need the following authorizations:

For all change operations on the license database, the PADM content of authorization field S_ADMI_FCD is checked for authorization object S_ADMI_FCD. This is the same check that SAP uses for installing system licenses.

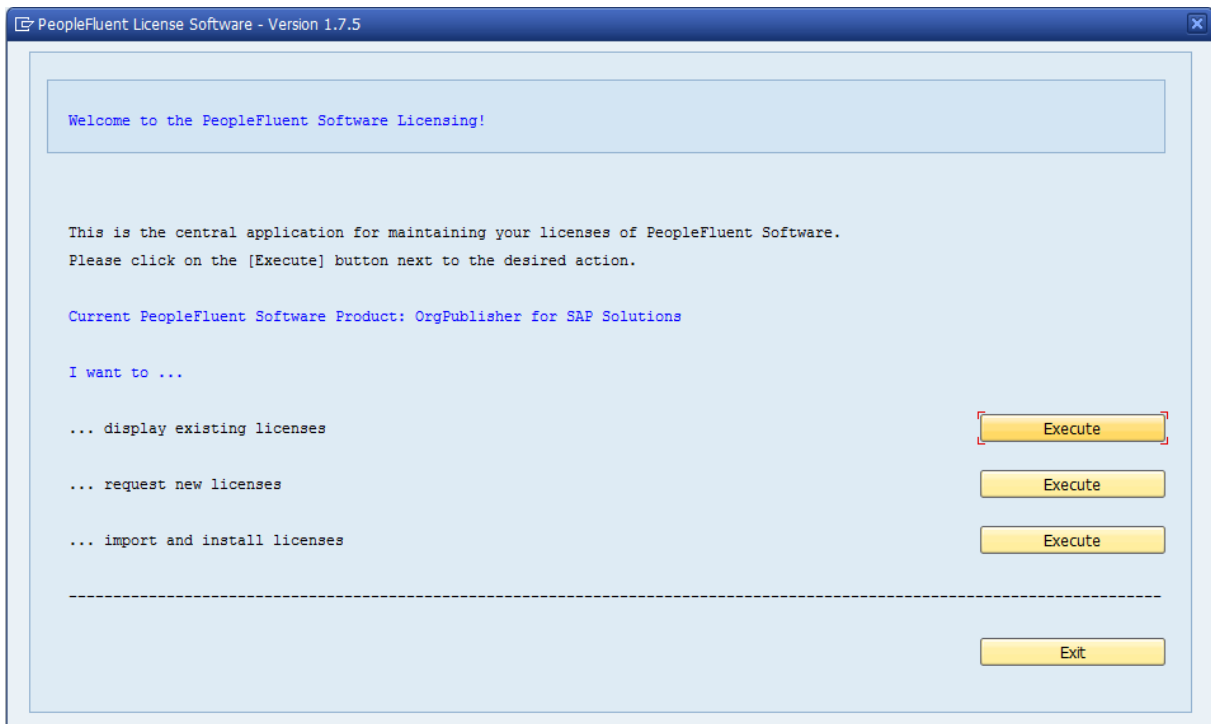
5.4 Starting the *Software License Cockpit*

If the *Software License Cockpit* is installed on your system, you can launch it via the *OrgPublisher SAP Interface* menu (transaction /EHR/SOL71_ORGPUB) by clicking *Application -> Licenses*.

5.5 The Main Menu

You find all available actions in the main menu. To execute a particular action, simply click the relevant "Execute" button.

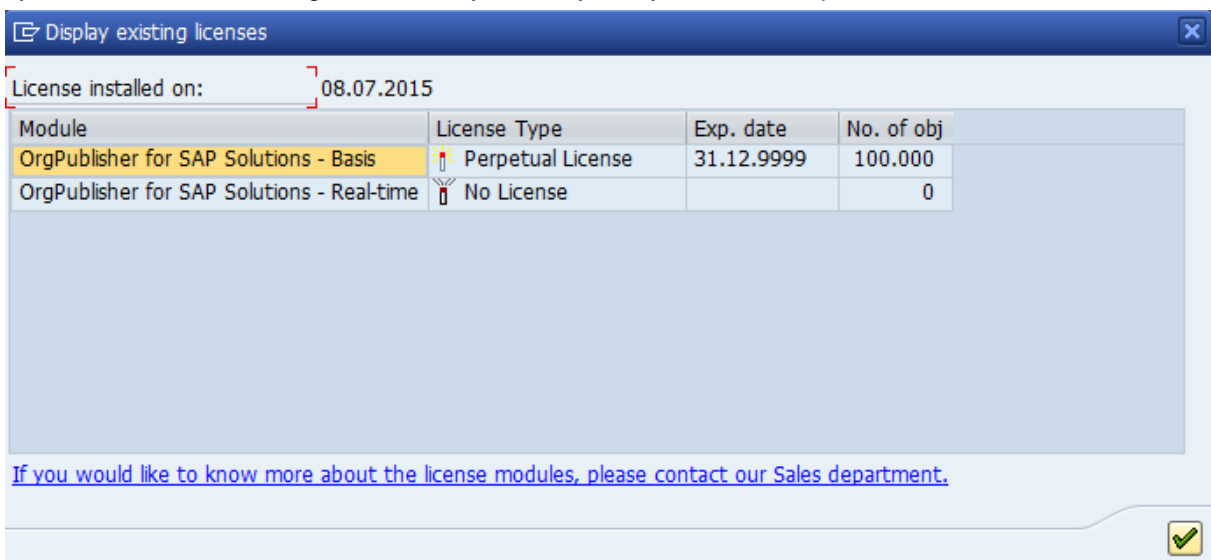
When you have completed the required action, the system returns to the main menu.



5.6 Displaying Existing Licenses

Depending on your SAP system landscape, you can also store licenses for other systems on one central system.

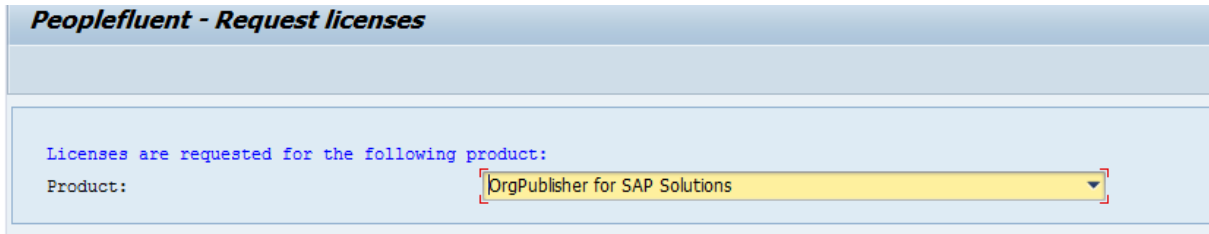
In the “I want to display existing licenses” function, the licenses that are stored in the local database are displayed. These may also be licenses in a distributed landscape, which do not belong to the local system, but instead belong to another system in your system landscape.



5.7 Requesting New Licenses

5.7.1 Selecting a Product

In this section, *OrgPublisher for SAP Solutions* is already set as the default product.



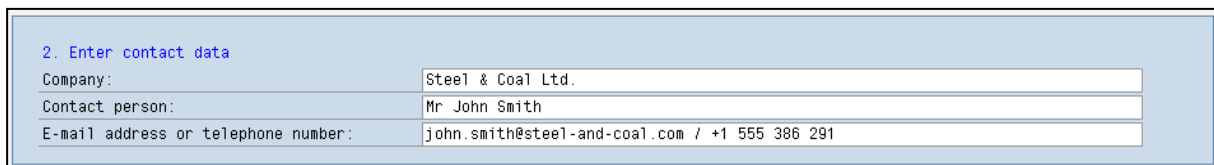
Peoplefluent - Request licenses

Licenses are requested for the following product:

Product: OrgPublisher for SAP Solutions

5.7.2 Entering Contact Details

Please enter your contact information in the next box. Of course, PeopleFluent treats this information confidentially and does not pass it on to third parties.



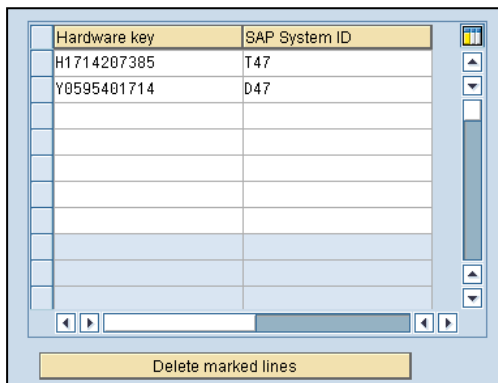
2. Enter contact data

Company:	Steel & Coal Ltd.
Contact person:	Mr John Smith
E-mail address or telephone number:	john.smith@steel-and-coal.com / +1 555 386 291

5.7.3 Listing the System Data

In the next box, you list all combinations of hardware keys and system IDs for which you want to request licenses. The local system data is already displayed in the list.

However, if your SAP system always has the same system ID, but works with changing hardware keys, please enter all known combinations. If you do not operate the hardware yourself, but operate it instead with a hosting provider and do not therefore know the hardware keys with which your system will work in the future, request just one license for the current hardware key in this step. If the hardware key changes, then request the license for the new hardware key. Licenses for previous hardware keys remain the same, even if you install licenses for other hardware keys.



Hardware key	SAP System ID
H1 71 4207385	T47
Y0595401714	D47

Delete marked lines

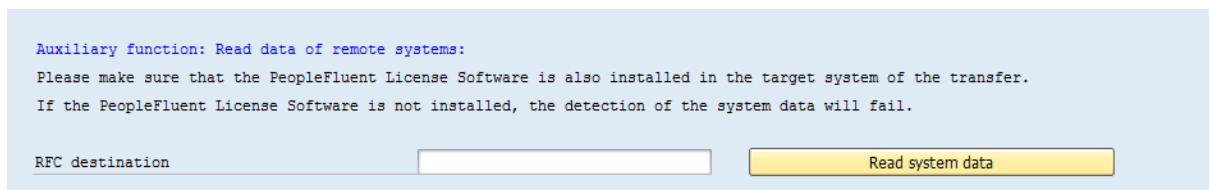
You can delete combinations of hardware key and system ID that you do not need by clicking the relevant button.

5.7.4 Reading System Data from a Remote System

You can determine the data in a remote system directly in the screen for requesting licenses if an RFC connection to this system is defined and the RFC user used is authorized to read the required system data.

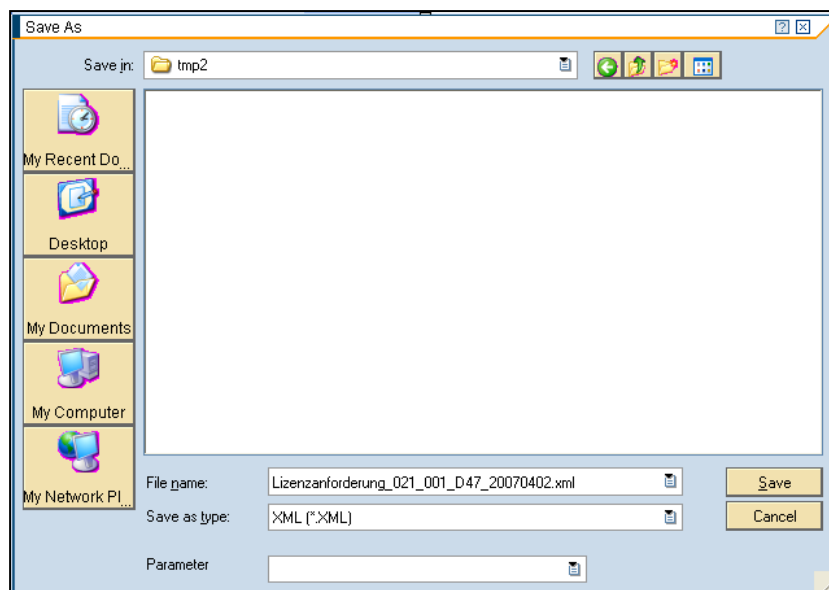
To determine system data in a remote system, enter the RFC connection in the relevant field in the 'Auxiliary function' box, and click [Read system data].

If it was possible to read the system data, you can add it to the table of hardware keys by clicking [Add to table].



5.7.5 Downloading a License Request to your Local PC

Once you have finished compiling all data for your license request, click [Request licenses]. Your request is first saved as an XML file on your local PC. In the 'Save As...' dialog, a file name is suggested, which you can overwrite, if required.



The XML file, which you send to *PeopleFluent* in the next step, does not contain any of your system's confidential data, but is visible to you in plain text. You can use a web browser to display the file.

```

- <asx:abap version="1.0">
- <asx:values>
  - <LICENSE_REQUEST>
    <SAPRL>620</SAPRL>
    <HR_RELEASE>470</HR_RELEASE>
    <CP_VERSION>001</CP_VERSION>
    <SOL>021</SOL>
    <VER>001</VER>
    <DATUM>2007-04-02</DATUM>
    <UZEIT>10:50:11</UZEIT>
    <UNAME>HCMS</UNAME>
    <CUST_NAME>Stein und Kohle GmbH</CUST_NAME>
    <CONTACT1>Herr Heinz Schulze</CONTACT1>
    <CONTACT2>heinz.schulze@stein-und-kohle.de / +49 691 217 542</CONTACT2>
    <SYSID>D47</SYSID>
  - <CUSTKEY_TAB>
    - <_PEC_-SLICENSES_CUSTKEY_STRUC>
      <CUSTKEY>H1714207385</CUSTKEY>
      <SYSID>T47</SYSID>
      <SAPRL>620</SAPRL>
      <HR_RELEASE>470</HR_RELEASE>
    </_PEC_-SLICENSES_CUSTKEY_STRUC>
    - <_PEC_-SLICENSES_CUSTKEY_STRUC>
      <CUSTKEY>Y0595401714</CUSTKEY>
      <SYSID>D47</SYSID>
      <SAPRL>620</SAPRL>
      <HR_RELEASE>470</HR_RELEASE>
    </_PEC_-SLICENSES_CUSTKEY_STRUC>
    </CUSTKEY_TAB>
  </SIGNATURE/>
</LICENSE_REQUEST>
</asx:values>
</asx:abap>

```

5.7.6 Sending the License Request

After successfully downloading your license request, you can use the [Create email] button to create an e-mail to the *PeopleFluent Software Registration* department. The system enters the correct address for the registration department;

wpa-registrations@peoplefluent.com

Please attach the XML file that has just been generated to the e-mail and send the e-mail.

Senden	An...	<input type="checkbox"/> wpa-registrations@peoplefluent.com
	Cc...	
	Betreff	Request for activation code

Dear customer,
In order to complete this step of the software registration, please fill in the contact data below and attach the downloaded file to this mail. Then send the mail to the [PeopleFluent Software Registration Group](#).

You have downloaded the license request to this file on your local workstation:
C:\Users\john.doe\Desktop\License request_071_001_D60_20160628.xml

----- License request -----
Product number: 071 ([OrgPublisher for SAP Solutions](#))

Customer number (if known):
Company:
Location:
Contact person:

If you have questions regarding this procedure, please do not hesitate to contact us:
<mailto:orgpub.support@peoplefluent.com>

This completes the first part of product activation.

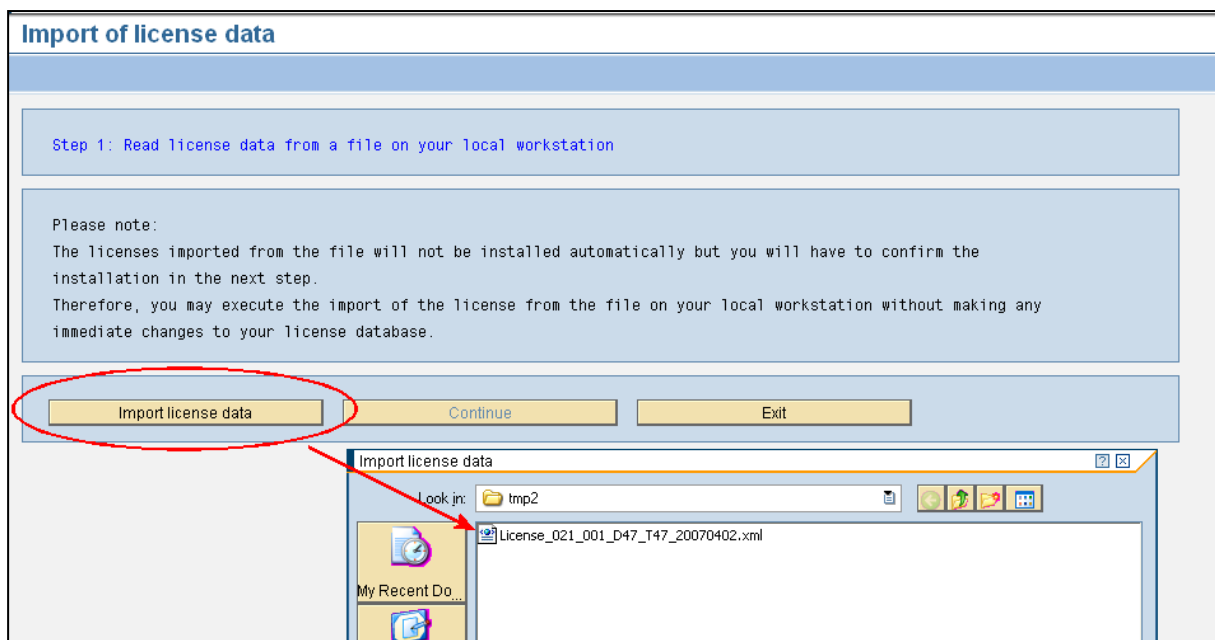
5.8 Importing and Installing Licenses

In response to your license request, the *PeopleFluent Software Registration* department sends an e-mail with an XML file attached. Please save the XML file to a directory on your local PC.

In the *Software License Cockpit*, choose “...import and install licenses” in the menu.

5.8.1 Importing the License Data

The first step is to import the license data from the local file to the SAP system. In this step, the licenses are not yet installed, which means that importing the data does not make any changes to your license database.



5.8.2 Installing the Licenses

After a system message is displayed informing you that the file was imported successfully, click [Continue] to go to the next screen in which you can install the imported licenses.

6 Appendix

6.1 Authorizations

Authorizations in Role EHR-SOLUTION:_ORGPUBLISHER

This role contains the following authorizations, which are required for Customizing OrgPublisher Interface and for starting the download program.

These are:

Authorizations for starting the transactions

/EHR/SOL71_IMG	Call up Implementation Guide (IMG) for OrgPublisher Interface
/EHR/SOL71_ORGPUB	Start the download report
/EHR/SOL71_WZ_FORMAT	Call up Wizard for Output Formats
SP11	Display TemSe Contents
/EHR/SOL71_PARAMS	Manage basic parameters
/EHR/SOL71_DOWNV1	Maintain the output formats
/EHR/SOL71_SCENA	Maintain the variants for transactions
/EHR/SOL71_TAGN	Maintain the column number and the XML element names
/EHR/SOL71_TEMPLATE	Maintain the template
/EHR/SOL71_WZ_FIELD	Wizard for Custom Fields
/EHR/SOL71_WZ_POSTY	Wizard for Position Types
/EHR/SOL71_WZ_OBJF	Wizard for Object Filters
/EHR/SOL71_WZ_OUTF	Wizard for Output Field Filters
OOAW	Maintain evaluation paths

Authorizations for the TemSe Read, write, and manage the TemSe objects. The TemSe can be used in the Interface to buffer data.

Other Authorizations

We also recommend the following authorizations. However, these are not contained in the delivered role.

Authorizations for starting the transactions

SM30	Call up table maintenance
SM36	Job management
SM34	Call up view cluster maintenance
SE38/SA38	Execute reports

For managing Customizing settings

Table maintenance	For authorization groups &NC& and PS
Customizing requests	Create and change
SAP GUI	Data export to load data to the local workstation.

Read Personnel Data and PD Objects

To read data for the respective objects from Organization Management and the HR master record, you must have the required access rights to the infotypes to be read and, if applicable, to the structural authorizations (to be defined depending on output format/scope).

OrgPublisher and Authorizations in the Intranet

Note: Once the data has been downloaded, it is outside the SAP authorization system. Safety mechanisms and tools must therefore be provided outside the SAP System. The access check, for example, via Active Server Pages (ASP) in the Intranet or similar.

6.2 Web Enabling WebAS – Prerequisites (for “Real-Time Extension” only)

Your Web Application Server must be configured to run BSP Services or Web Services.

To test this you could perform the following steps:

1. Start transaction SICF
2. Navigate in the tree to default_host->sap->bc->bsp->sap->it00. Right-click and choose “Activate Service”, if it is not already activated.

Also activate the following nodes:

default_host/sap/option

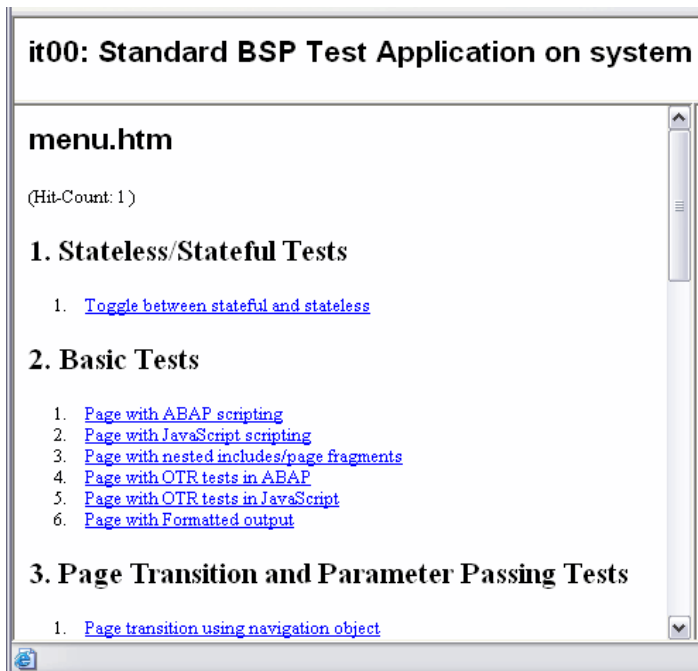
default_host/sap/public (standard icons and login screen)

default_host/sap/bc/bsp/sap/public (standard icons)

default_host/sap/bc/bsp/sap/system* (login screen)

In the dialog window select the Yes option with the tree symbol to activate all services below the selected node.

3. Right-click service IT00, and choose "Test Service".
A browser window should open. You should see the following screen with the heading "it00: Standard BSP Test Application on system <sysid>"



4. If your application uses the SAP standard login screen for web applications, the SSO profile parameters must be set correctly:
System profile parameters (RZ11) **login/accept_sso2_ticket** and **login/create_sso2_ticket** must be set to "1" if the standard web login screen (from service /sap/bc/bsp/sap/system) should be used. The login application requests a logon ticket from the WebAS, which it sets in a cookie in the browser.
For more information, see the documentation for the parameters in transaction RZ11.
5. If the application still does not show up in your browser, you should contact your system administrator as he may have to change some other profile parameters and restart the system.
Hints for the Administrator:
6. Check the profile parameters in transaction SMICM (Goto->Parameters->Display). Especially **icm/host_name_full** should be set correctly (see attached document BSP-InDepth--Fully-Qualified-Domain-Names.PDF)

The HTTP service must be running (SMICM Goto->Services; Check the service; Goto->Service->Activate)