

OrgPublisher 10 Silverlight Configuration

Table of Contents

1. OrgPublisher Silverlight Charts	3
Audience	3
System Requirements	3
OrgPublisher Requirements for Publishing with Microsoft Silverlight	3
OrgPublisher with Microsoft Silverlight Browser Specifications	3
2. IIS 7 Setup and Configuration	4
2.1 Confirming Windows Features	4
2.2 Verify the installation of .Net Framework 4 Extended and add the Publish To Location folder	6
3. Automated Internet Information Services 7 (IIS7) Setup.....	8
3.1 Executing the Setup Batch File.....	8
4. Manual Internet Information Services (IIS7) Setup.....	10
4.1 Application Pool – Setup and Configuration.....	10
4.2 Convert Folders to Applications	11
4.3 Set Anonymous User	12
4.4 Add Module Mapping(s) for charts	13
4.5 Set File Permissions	16
Trademarks.....	19

The information contained in this document is confidential and proprietary to Aquire Solutions, Inc. This information may not be distributed or used for any purpose other than the evaluation of Aquire solutions, nor may it be disclosed to any party without the prior written consent from Aquire. Copyright © 2001 - 2011 Aquire. All Rights Reserved.



1. OrgPublisher Silverlight Charts

The purpose of this document is to provide detailed information on the OrgPublisher Microsoft® Silverlight® system requirements and Internet environmental settings necessary to deploy this feature and publish OrgPublisher Silverlight charts.

Audience

The intended audience for this document is the OrgPublisher Chart Administrator with full Chart Administrator permissions.

Note: *Permissions to turn Windows features on or off are required.*

System Requirements

OrgPublisher Requirements for Publishing with Microsoft Silverlight

- Pentium® PC compatible or greater
- A Microsoft® IIS (ISAPI enabled) Windows® 2003, Windows® 2008, Windows® XP, Web server or Apache™ HTTP Server 2.0+ running Windows® operating system
- A virtual directory with execute permissions for scripts and executables on the Web server
- 60 MB available hard disk space
- 1 GB of RAM minimum, depending on chart size
- Microsoft® .NET® Framework 4 Extended

OrgPublisher with Microsoft Silverlight Browser Specifications

- Pentium® PC compatible or greater
- Microsoft Windows® XP, Windows® Vista™, or Windows® 7 operating system
- 512 MB of RAM
- 60 MB available hard disk space
- Microsoft® Silverlight® Client Version 4.0.60129.0

One of the following browsers:

- Microsoft® Internet Explorer 7 and later for all versions of Windows® mentioned above
- Google Chrome™ Version 12
- Mozilla™ Firefox® 5
- Netscape® 9
- Mac Safari® 5

The information contained in this document is confidential and proprietary to Aquire Solutions, Inc. This information may not be distributed or used for any purpose other than the evaluation of Aquire solutions, nor may it be disclosed to any party without the prior written consent from Aquire. Copyright © 2001 - 2011 Aquire. All Rights Reserved.

2. IIS 7 Setup and Configuration

You will be publishing your Silverlight charts to **C:\inetpub\wwwroot**, as this folder already has the required permissions to run “children” files.

2.1 Confirming Windows Features

Before you can publish a Silverlight chart you must confirm that specific Windows features are turned on.

1. Access your **Control Panel**, and then select **Programs and Features**.
2. On the left side of the program list dialog, click **Turn Windows features on or off**.

The *Windows Features* dialog opens.

3. Using the example on the next page, confirm that your machine settings match the settings in the example.

Note: *You must expand your list of features to determine if all of the correct features are selected.*

The information contained in this document is confidential and proprietary to Aquire Solutions, Inc. This information may not be distributed or used for any purpose other than the evaluation of Aquire solutions, nor may it be disclosed to any party without the prior written consent from Aquire. Copyright © 2001 - 2011 Aquire. All Rights Reserved.

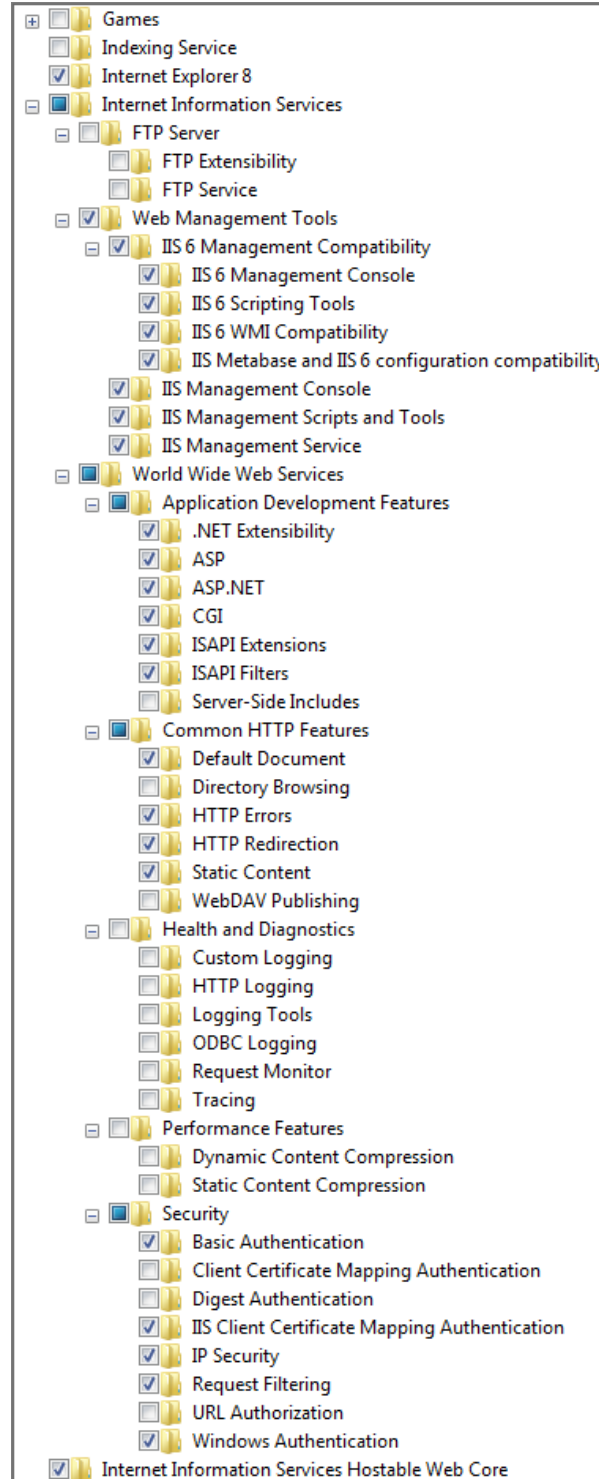


Figure 1

The information contained in this document is confidential and proprietary to Aquire Solutions, Inc. This information may not be distributed or used for any purpose other than the evaluation of Aquire solutions, nor may it be disclosed to any party without the prior written consent from Aquire. Copyright © 2001 - 2011 Aquire. All Rights Reserved.

2.2 Verify the installation of .Net Framework 4 Extended and add the Publish To Location folder

1. Verify that you have Microsoft .NET Framework 4 Extended by opening the **Control Panel** and selecting **Programs and Features**.

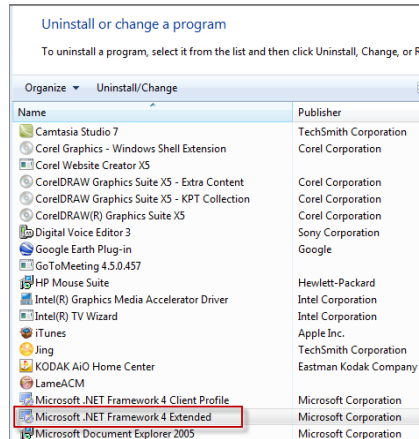


Figure 2

If you do not have .NET Framework 4 Extended installed, check with your IT administrator or install it from <http://go.microsoft.com/fwlink/?LinkID=186913>.

2. After .NET 4 Framework Extended is installed, navigate to **C:\inetpub\wwwroot** and add a subfolder named **OPSilverlight**.

NOTE: For this folder you must use the same names that are used for the Application Pool (Section 4.1 Step 5).

This name is used for the creation of the Silverlight identity in Set File Permissions (Section 4.5 Step 5.)

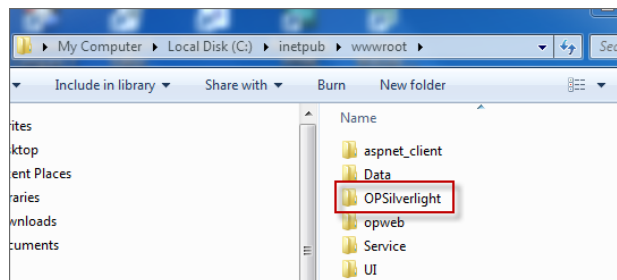


Figure 3

The information contained in this document is confidential and proprietary to Aquire Solutions, Inc. This information may not be distributed or used for any purpose other than the evaluation of Aquire solutions, nor may it be disclosed to any party without the prior written consent from Aquire. Copyright © 2001 - 2011 Aquire. All Rights Reserved.

3. Follow the *Publishing Wizard* and publish a cross browser chart using Microsoft Silverlight. After publication, the following additional folders are added to the **OPSilverlight** folder.

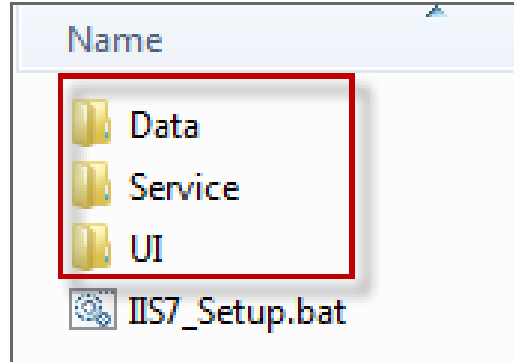


Figure 4

The information contained in this document is confidential and proprietary to Aquire Solutions, Inc. This information may not be distributed or used for any purpose other than the evaluation of Aquire solutions, nor may it be disclosed to any party without the prior written consent from Aquire. Copyright © 2001 - 2011 Aquire. All Rights Reserved.

3. Automated Internet Information Services 7 (IIS7) Setup

Note: *OrgPublisher 10* also provides the capability to perform all the steps necessary to complete the IIS7 setup automatically by executing a batch file.

You can also choose to process each step in the setup without using the automated Setup batch file. See Section 4 for the manual, individual steps for setting up IIS 7 for Silverlight.

3.1 Executing the Setup Batch File

Notice that a file titled **IIS7_Setup.bat** was also added to the **OPSilverlight** folder in **Step 3** above when you published your first Silverlight chart.

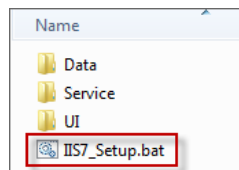


Figure 5

1. This file is a *Batch File Execution* file and can be used to complete all of the following steps. The Chart Administrator can run this file to set up IIS7.
2. Access C:\inetpub\wwwroot\OPSilverlight, and double-click **IIS7_Setup.bat**.

An *MS-DOS Command Prompt* window opens.

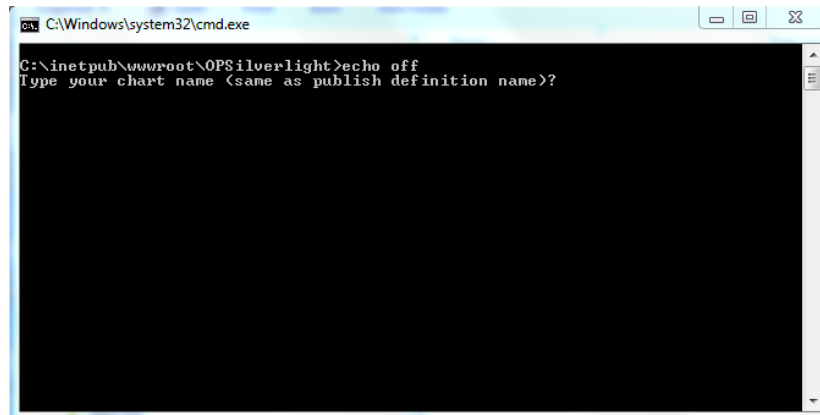


Figure 6

The information contained in this document is confidential and proprietary to Aquire Solutions, Inc. This information may not be distributed or used for any purpose other than the evaluation of Aquire solutions, nor may it be disclosed to any party without the prior written consent from Aquire. Copyright © 2001 - 2011 Aquire. All Rights Reserved.

3. As requested in the window, type the name of the chart you published and click **Enter**.

Note: *Each Silverlight chart you publish with a new Publishing Definition requires that a handler mapping be made to it; specifically, a Module Mapping. See Section 4.4.*

When the setup is complete, the *Command Prompt* window closes.

The information contained in this document is confidential and proprietary to Aquire Solutions, Inc. This information may not be distributed or used for any purpose other than the evaluation of Aquire solutions, nor may it be disclosed to any party without the prior written consent from Aquire. Copyright © 2001 - 2011 Aquire. All Rights Reserved.

4. Manual Internet Information Services (IIS7) Setup

If you chose not to use the automated setup process above, the following steps can be followed to complete the IIS7 setup.

4.1 Application Pool – Setup and Configuration

To open Internet Information Services:

1. Click **Start**, type **Run** in the search field, and press **Enter**.
2. In the **Run** dialog, type **Inetmgr** click **OK** to start Internet Information Service (IIS) Manager.
3. In the **Actions** section on the right side of the window, click **View Application Pools**.
4. If Silverlight is not listed in the **Name** column, click **Add Application Pool** in the **Actions** section.

The **Add Application Pool** dialog opens.

5. In the **Name** box, type **OPSilverlight**.

Note: This name must match the folder name in *Section 2.2, Step 2*.

6. In the **.NET Framework version** drop-down, select the currently installed version of the .NET 4 Framework, and click **OK**.

OPSilverlight is added to the **Application Pool** list.

7. Select the Application Pool you just created and in the **Actions** section on the right side click **Advanced Settings**.

If your computer is a 32bit machine, go to **Step 9** in this section.

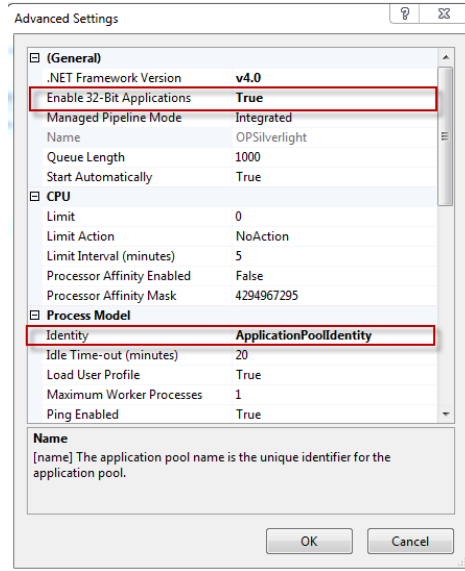


Figure 7

8. If **Enable 32-Bit Application** is not set to **True**, click it to select **True**.
9. Under **Process Model**, in the Figure above, confirm **Identity** is set to **ApplicationPoolIdentity**, and then click **OK**.

4.2 Convert Folders to Applications

1. In the **Connections** column double-click: **Sites**, **Default Web Site**, and then **OPSilverlight**.

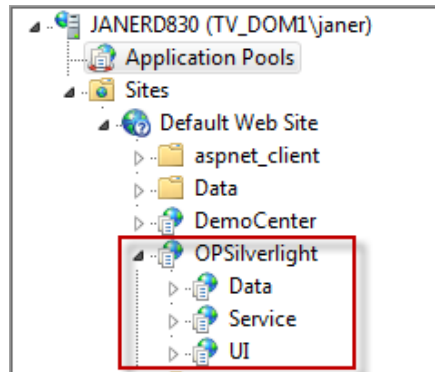


Figure 8

2. Right click on each folder and select **Convert to Application**.

The *Add Application* dialog opens.

The information contained in this document is confidential and proprietary to Aquire Solutions, Inc. This information may not be distributed or used for any purpose other than the evaluation of Aquire solutions, nor may it be disclosed to any party without the prior written consent from Aquire. Copyright © 2001 - 2011 Aquire. All Rights Reserved.

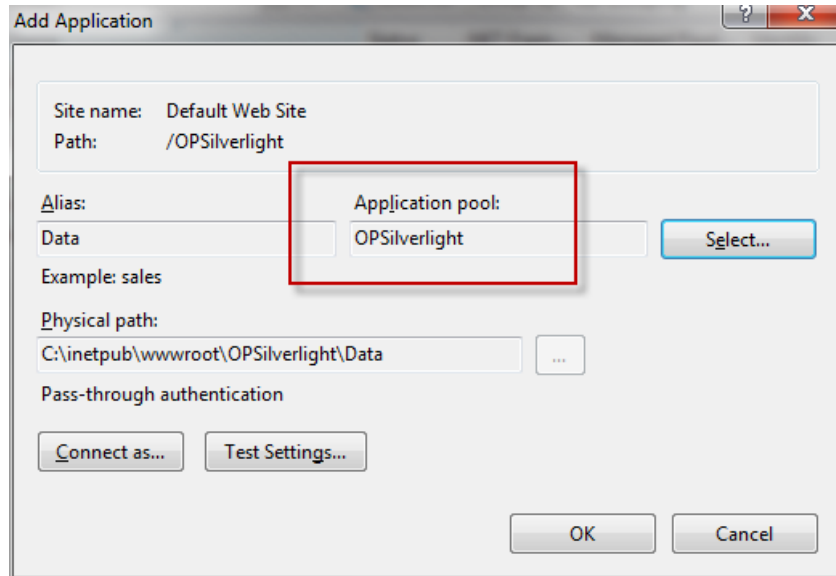


Figure 9

3. Click **Select**, **OPSilverlight**, and then click **OK**.

4.3 Set Anonymous User

The following 3 steps must be repeated for the **OPSilverlight**, **Data**, **Service**, and **UI** folders.

1. Under the **IIS** section, double-click **Authentication**

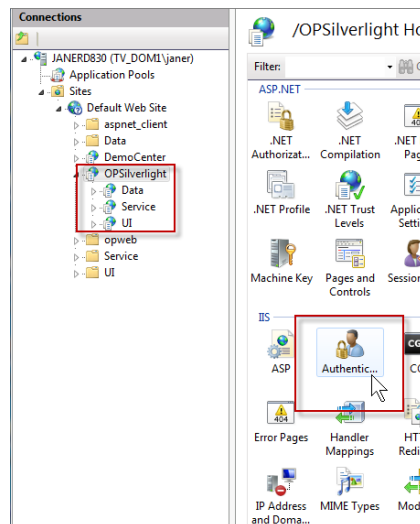


Figure 10

The information contained in this document is confidential and proprietary to Aquire Solutions, Inc. This information may not be distributed or used for any purpose other than the evaluation of Aquire solutions, nor may it be disclosed to any party without the prior written consent from Aquire. Copyright © 2001 - 2011 Aquire. All Rights Reserved.

The **Authentication** dialog opens.

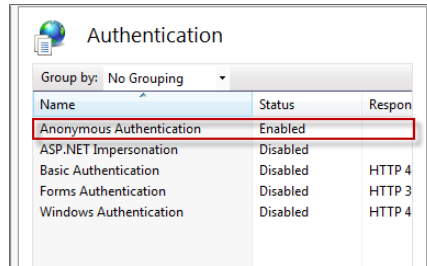


Figure 11

2. Right click **Anonymous Authentication** and select **Edit**.

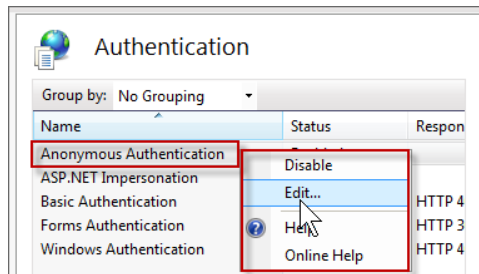


Figure 12

The **Edit Anonymous Authentication Credentials** dialog opens.

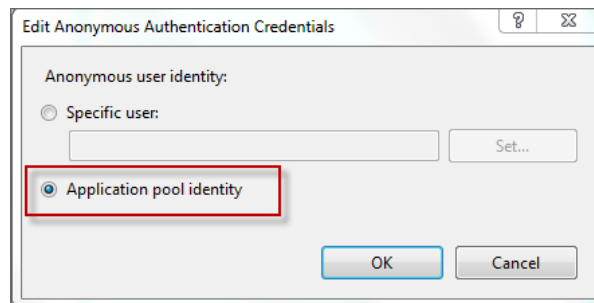


Figure 13

3. If the **Application pool identity** option is not, select it, and then click **OK**.

4.4 Add Module Mapping(s) for charts

Each Silverlight chart that you publish with a new Publishing Definition requires that a handler mapping be made to it; specifically, a Module Mapping.

NOTE: *No other steps in this document need to be executed for charts published with new Publishing Definitions.*

The information contained in this document is confidential and proprietary to Aquire Solutions, Inc. This information may not be distributed or used for any purpose other than the evaluation of Aquire solutions, nor may it be disclosed to any party without the prior written consent from Aquire. Copyright © 2001 - 2011 Aquire. All Rights Reserved.

1. In the **Connections** column, click the **Data** folder, and then double-click **Handler Mapping**.

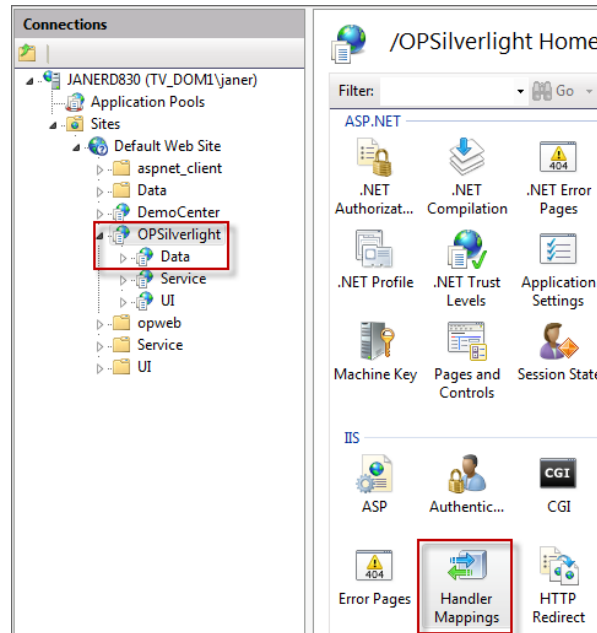


Figure 14

2. In the resulting **Actions** column, click **Add Module Mapping**.
The **Add Module Mapping** dialog opens.

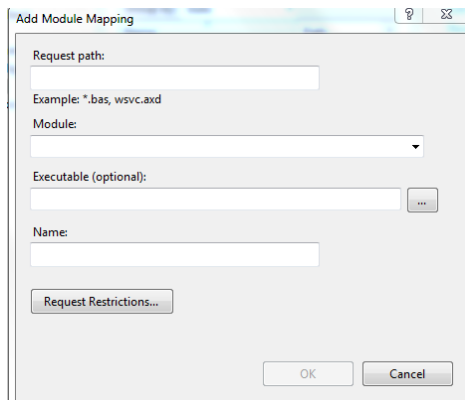


Figure 15

3. Using the screen shot below as an example set the options in your **Add Module Mapping** dialog. In this example we refer to a chart titled Pacific Eastern. Substitute the name of the chart with the chart name you published to: **C:\inetpub\wwwroot\OPSilverlight\Data**.

The information contained in this document is confidential and proprietary to Aquire Solutions, Inc. This information may not be distributed or used for any purpose other than the evaluation of Aquire solutions, nor may it be disclosed to any party without the prior written consent from Aquire. Copyright © 2001 - 2011 Aquire. All Rights Reserved.

4. Give the Module Mapping a name; in this example, we use OPSilverlight_Pacific Eastern.dll.

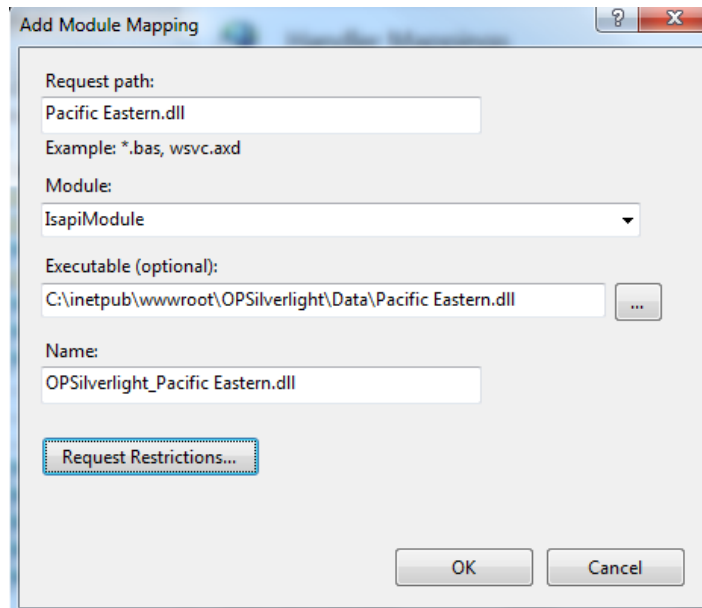


Figure 16

5. Click **OK**.

The following dialog will open:

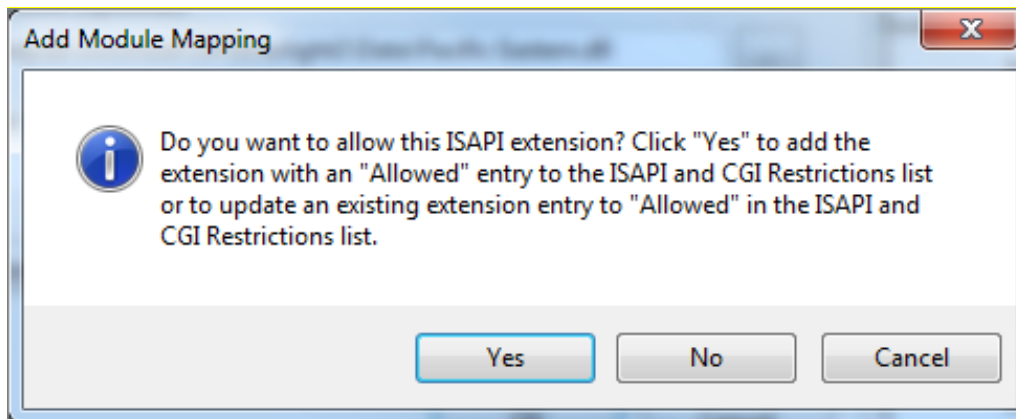


Figure 17

6. Click **Yes**.
7. Close IIS.

The information contained in this document is confidential and proprietary to Aquire Solutions, Inc. This information may not be distributed or used for any purpose other than the evaluation of Aquire solutions, nor may it be disclosed to any party without the prior written consent from Aquire. Copyright © 2001 - 2011 Aquire. All Rights Reserved.

4.5 Set File Permissions

File permissions are set to give OrgPublisher full control to manipulate Silverlight charts.

1. Go to **C:\inetpub\wwwroot\OPSilverlight** (or to the physical location where you published your chart, if that location is other than the OPSilverlight folder you created in Section 2.2, Step 2).

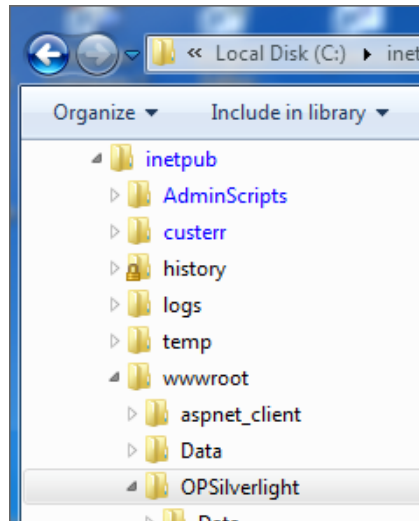


Figure 18

2. Right-click **OPSilverlight**, and then select **Properties, Security**.
The *OPSilverlight Properties* dialog opens.

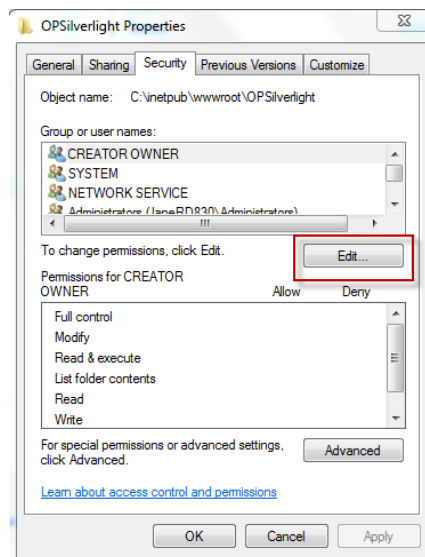


Figure 19

The information contained in this document is confidential and proprietary to Aquire Solutions, Inc. This information may not be distributed or used for any purpose other than the evaluation of Aquire solutions, nor may it be disclosed to any party without the prior written consent from Aquire. Copyright © 2001 - 2011 Aquire. All Rights Reserved.

3. Click **Edit**, and then click **Add** on *Permissions for OPSilverlight* dialog.
The *Select Users, Computers, Service Accounts, or Groups* dialog opens.

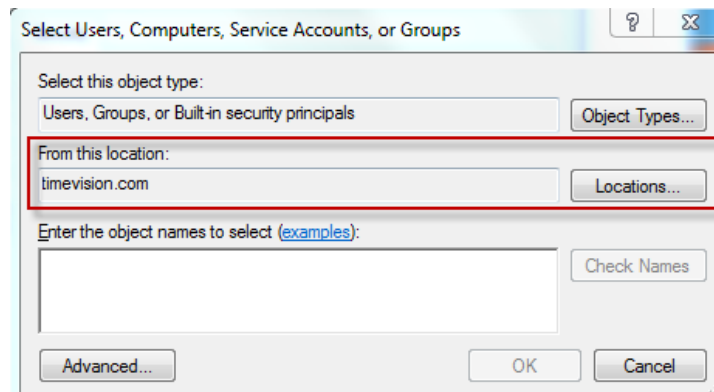


Figure 20

4. Click the **Locations** button, and then select your computer machine name. In our case, the name is **JANERD830**.
The *Select Users or Groups* dialog opens.

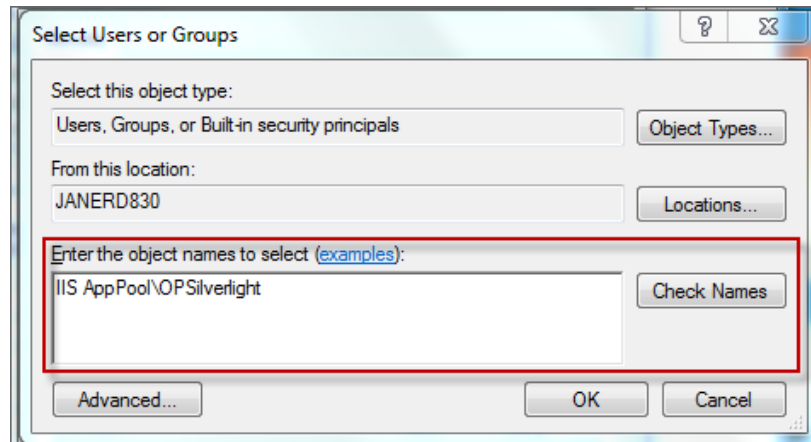


Figure 21

5. In the **Check Names** box, type **IIS AppPool\OPSilverlight**, click the **Check Names** button.
6. Click **OK**.

Note: *If the system does not find the group, please refer back to the following and make sure that the names used match exactly in the:*

- *Verify the Installation of .Net Framework 4 Extended and add the Publish To Location folder (Section 2.2, Step 2)*
- *Application Pool – Setup and Configuration (Section 4.1, Step 5)*

The information contained in this document is confidential and proprietary to Aquire Solutions, Inc. This information may not be distributed or used for any purpose other than the evaluation of Aquire solutions, nor may it be disclosed to any party without the prior written consent from Aquire. Copyright © 2001 - 2011 Aquire. All Rights Reserved.

The *Permissions for OPSilverlight* dialog opens.

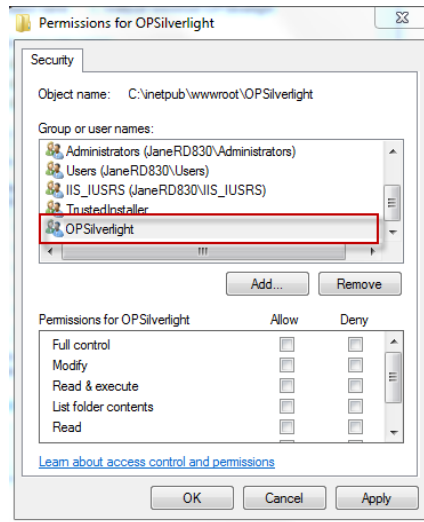


Figure 22

7. In the **Groups** or **user names** box, locate and select **OPSilverlight**.
8. In the *Permissions for OPSilverlight* dialog check the **Full control, Allow** check box; all the boxes will be checked except for **Special Permissions**, the last box in the list.

Click **OK**, and the *OPSilverlight Properties* dialog opens.

9. Click **OK**.

Your OrgPublisher 10 Silverlight Configuration Setup is complete and you should be able to view your published Silverlight chart now by using the URL provided in the Silverlight Publishing Summary dialog.



The information contained in this document is confidential and proprietary to Aquire Solutions, Inc. This information may not be distributed or used for any purpose other than the evaluation of Aquire solutions, nor may it be disclosed to any party without the prior written consent from Aquire. Copyright © 2001 - 2011 Aquire. All Rights Reserved.

Trademarks

Aquire

5215 N. O'Connor Blvd., Suite 300

Irving, Texas 75039

USA

1+ 214.574.5020

Info@acquire.com

<http://www.acquire.com>

Trademarks

All trademarks are properties of their respective owners.

OrgPublisher™, Unifi™, OrgHistory™, OrgPlan™, OrgPublisher Premier™, InSight™, and OrgPublisher™, SAP® are trademarks of Aquire in the United States and other countries.

Microsoft®, Windows®, Windows 2003, Windows 2008, Windows XP, Windows Vista, Internet Explorer, and Silverlight are either registered trademarks or trademarks of Microsoft Corporation in the United States and other countries.

Netscape® and the Netscape N and Ship's Wheel logos are registered trademarks of Netscape Communications Corporation in the U.S. and other countries.

Oracle® is a registered trademark of Oracle Corporation.

HTML, DHTML, XML, XHTML are trademarks or registered trademarks of W3C®, World Wide Web Consortium, Massachusetts Institute of Technology.

SAP® and mySAP™ are trademarks or registered trademarks of SAP AG in Germany and in several other countries all over the world.

JAWS® for Windows is a registered trademark of Freedom Scientific in the United States and other countries.

Apache™ is a trademark of The Apache Software Foundation.

Foxfire is a registered trademark of Mozilla, a global, nonprofit organization in the United States and other countries.

Safari® is a registered trademark of Apple Inc. in the United States and other countries.

Chrome is a registered trademark of Google Inc. in the United States and other countries.

The information contained in this document is confidential and proprietary to Aquire Solutions, Inc. This information may not be distributed or used for any purpose other than the evaluation of Aquire solutions, nor may it be disclosed to any party without the prior written consent from Aquire. Copyright © 2001 - 2011 Aquire. All Rights Reserved.