

OrgPublisher 9 Architecture Overview

Table of Contents

OrgPublisher Introduction.....	3
Architecture Overview.....	5
Data Sources.....	6
OrgPublisher User Descriptions.....	7
Publishing Options.....	9
EChart Rich Client Topology	12
EChart Thin Client Topology	13
EChart Real-time Topology	14
PluginX Topology.....	15
HTML Topology	16
PDF Topology.....	17
Web Administration Server Topology.....	18
OrgPlan	19
OrgPlan Topology	19
Client PC Requirements.....	20
Optional Server Requirements	20

The information contained in this document is confidential and proprietary to Aquire Solutions, Inc. This information may not be distributed or used for any purpose other than the evaluation of Aquire Solutions, nor may it be disclosed to any party without the prior written consent from Aquire. Copyright © 2001 - 2009 Aquire. All Rights Reserved.

OrgPublisher Introduction

This document provides a high level overview of OrgPublisher and information related to installing the application. It includes deployment requirements and, in addition, it provides links to information you may need for a successful install.

OrgPublisher™ automatically builds organizational charts from information stored in your company HR system.

It charts hierarchical data (such as person-to-person, position-to-position and department-to-department relationships) from your existing HR system, and automatically creates an org chart based on the hierarchy extracted.

The infrastructure and systems requirements OrgPublisher are usually readily available within most organizations.

OrgPublisher connects to an ODBC compliant data source and allows for import of a variety of data sources.

OrgPublisher is available in:

- OrgPublisher 9
- OrgPublisher Premier (includes OrgSuccession™ Features)
- OrgPublisher for SAP® solutions
- OrgPublisher for Oracle® HRMS
- OrgPublisher for PeopleSoft® HCM

After installation, your OrgPublisher administrator creates the charts from the data available. A **New Chart Wizard** walks the administrator through all of the steps to access the data and format the chart.

Data Sources

OrgPublisher charts hierarchical data (such as person-to-person, position-to-position and department-to-department relationships) from your existing HR system, and automatically creates an org chart based on the hierarchy extracted.

OrgPublisher connects to an ODBC compliant data source and allows for import of data directly from the data source, as well as other sources of data such as XML, CSV, and LDAP. In addition, connections to well known ERP and HR systems such as, PeopleSoft® and Oracle® are easily achieved. Additionally, OrgPublisher for *SAP® solutions* comes with easily customizable SAP® output formats.

For a detailed list of data source options, see [Data Sources](#).

The information contained in this document is confidential and proprietary to Aquire Solutions, Inc. This information may not be distributed or used for any purpose other than the evaluation of Aquire Solutions, nor may it be disclosed to any party without the prior written consent from Aquire. Copyright © 2001 - 2009 Aquire. All Rights Reserved.

OrgPublisher Users

There are multiple OrgPublisher user categories, allowing you to be specific about access privileges and the type of published output each user requires:

- Administrators
- Power End Users
- Standard End Users
- Planning Users

For more information on the activities assigned to each user type, see [OrgPublisher User Descriptions](#).

Publishing Options

OrgPublisher provides a variety of publishing options that range from displaying a PDF on your intranet, to interactive charts that are updated on a specified schedule, and interactive charts in a real-time environment.

Once published to your corporate intranet, the data represented on the chart can be used for on-the-fly data analysis and reporting.

For more information on publishing options, see [Publishing Options](#).

Client PC Requirements

User PC requirements will vary depending upon the publishing option and the user role.

For more information on client PC requirements see [Client PC Requirements](#)

Web Administration Server

In addition to the regular administrator function, OrgPublisher provides extended capability with the Web Administration Server function that is installed on a Web server. This allows multiple administrators to access OrgPublisher, and it also provides access through any browser on the Internet.

For more information on publishing options, see [Web Administration Server](#).

For more information, please contact Aquire at <http://www.aquire.com/>.

The information contained in this document is confidential and proprietary to Aquire Solutions, Inc. This information may not be distributed or used for any purpose other than the evaluation of Aquire Solutions, nor may it be disclosed to any party without the prior written consent from Aquire. Copyright © 2001 - 2009 Aquire. All Rights Reserved.

Architecture Overview

OrgPublisher architecture consists of four primary components, shown in Figure 1.

1. A **Data Source** provides the data to be acted upon to produce the org chart.
2. An **Org Chart Publishing Computer** on which OrgPublisher has been installed that enables the org chart administrator to select the appropriate data, apply the appropriate arrangement and formatting components, and publish the final chart for viewing by end users.
3. An **Intranet Web Server** or computer to host the published org chart files; may or may not be the same as the publishing computer. The OrgPublisher application utilizes a Windows® platform computer, which can be either a network computer or a Web server. The Apache™ HTTP Server 2.0+ running Windows® is also supported. For large/secure charts using EChart publishing, an ISAPI server with Microsoft® IIS is required.
4. A **Web Browser** that provides for interactive viewing of the published org chart information. The selected publishing format prescribes the viewer's experience and capabilities, as well as the required browser components. Publishing choices include Graphic, HTML, EChart Thin Client and PDF (publishing formats that require no additional browser components).

PluginX and EChart Rich Client options provide interactive org charts that require the installation of the OrgPublisher PluginX component.

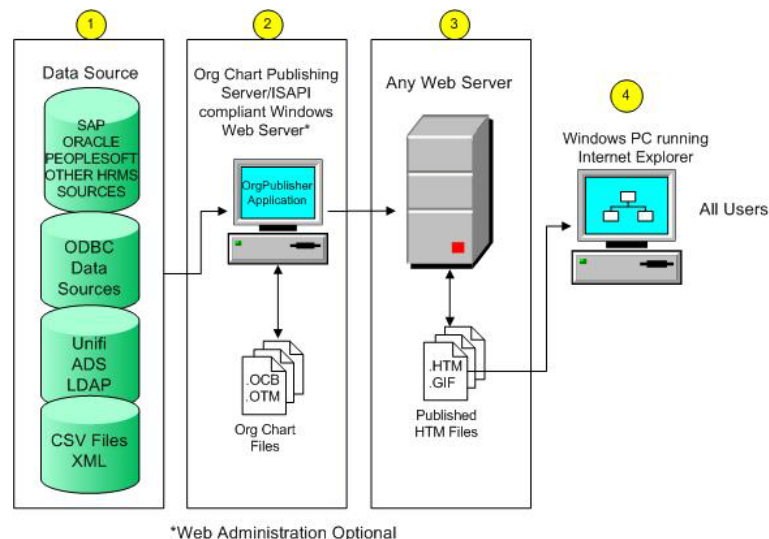


Figure 1

The information contained in this document is confidential and proprietary to Aquire Solutions, Inc. This information may not be distributed or used for any purpose other than the evaluation of Aquire Solutions, nor may it be disclosed to any party without the prior written consent from Aquire. Copyright © 2001 - 2009 Aquire. All Rights Reserved.

Data Sources

The data source can be any data source, or any combination of data sources, that contains reporting information. The data source connectivity is accomplished in one of several ways. OrgPublisher provides ODBC, XML, and CSV file connection. Additional connectors for Oracle® HR, Directory Servers, and PeopleSoft® are available from the Aquire Web site. OrgPublisher for SAP® solutions is available for SAP® customers.

Additional connectors are available from our Alliance Partners.

Data sources include:

- HR, ERP, and financial systems databases from several vendors such as:
 - SAP®
 - Oracle®
 - PeopleSoft®
- ODBC data sources such as:
 - Microsoft® SQL Server®
 - Microsoft® Access®
 - Oracle®
 - Other ODBC compliant data sources
- Directory Servers such as:
 - Microsoft® Exchange™
 - Microsoft® ADS™
 - Netscape®
 - Novell®
- Other data sources
 - XML data sources
 - CSV (comma separated value) data files

Any combination of two or more ODBC, XML, and text data sources can also be used to build a single chart. The **New Chart Wizard** allows the use of multiple data sources.

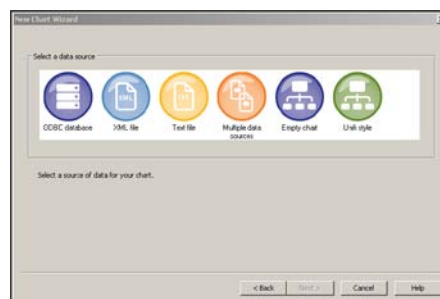


Figure 2

The information contained in this document is confidential and proprietary to Aquire Solutions, Inc. This information may not be distributed or used for any purpose other than the evaluation of Aquire Solutions, nor may it be disclosed to any party without the prior written consent from Aquire. Copyright © 2001 - 2009 Aquire. All Rights Reserved.

OrgPublisher User Descriptions

OrgPublisher provides for multiple OrgPublisher user categories, allowing you to be specific about access and/or privileges granted to users.

For user system requirements, see [Client PC Requirements](#).

OrgPublisher User Descriptions	
User Title	Privileges
Administrators	<p>The OrgPublisher application is typically installed on the chart administrator's PC, and the administrator is responsible for the following chart functions:</p> <ul style="list-style-type: none"> • Create • Format • Secure <p>Publish various types of charts, reports, and directories</p>
Power End Users	<p>Power end users can do the following:</p> <ul style="list-style-type: none"> • Extensive printing capabilities • Search and Group for analysis • Multiple Style Options • Send output to PowerPoint • Could require restricted viewing based on role within the company • Access the OrgPlan Function: <ul style="list-style-type: none"> ○ Add, delete, move boxes and departments ○ Create change report ○ Send output to another user for review
Standard End Users	<p>Standard end users can access published charts, reports, and directories, providing them with the following:</p>

The information contained in this document is confidential and proprietary to Aquire Solutions, Inc. This information may not be distributed or used for any purpose other than the evaluation of Aquire Solutions, nor may it be disclosed to any party without the prior written consent from Aquire. Copyright © 2001 - 2009 Aquire. All Rights Reserved.

OrgPublisher User Descriptions	
User Title	Privileges
	<ul style="list-style-type: none"> • View of the organizational structure • General information, such as phone and e-mail • Limited printing capabilities • Limited search capabilities
Planning Users	Planning users have special privileges allowing them to: <ul style="list-style-type: none"> • Perform org modeling or succession planning scenarios using our web-based viewing solution

The information contained in this document is confidential and proprietary to Aquire Solutions, Inc. This information may not be distributed or used for any purpose other than the evaluation of Aquire Solutions, nor may it be disclosed to any party without the prior written consent from Aquire. Copyright © 2001 - 2009 Aquire. All Rights Reserved.

Publishing Options

Org charts are created using OrgPublisher on a Windows® platform computer (workstation or server) that provides the org chart administrator with the capabilities to select the desired data, associate the appropriate formatting characteristics to data, and publish the chart for viewing by end users.

Installation is straight forward, using a standard wizard driven interface to collect information. The installation is an executable (EXE). At this time a Microsoft®, or Windows®, Installer (MSI) installation version is not available.

The following table provides an overview of the requirements for each of OrgPublisher’s publishing options.

Refer to the *Web Administration Installation Guide* to install OrgPublisher on a server for use by multiple administrators or to allow administrator access from any laptop or home computer.

Format	Browser	Client	Server	Criteria for Usage
EChart Rich Client (I) Figure 3	Microsoft® Internet Explorer 6 and later	Microsoft®, Windows® XP, Windows® Vista™, and Windows® 7 operating system	Requires a Microsoft® IIS (ISAPI enabled) Windows® 2003 Web server, Windows® 2008 Web server or Apache™ HTTP Server 2.0+ running Windows®	Fast performance for medium to very large company. Security at chart, hierarchical or field level. Feature rich options for end users. Intended for power users and regular users.
EChart Thin Client (I) Figure 4	Microsoft® Internet Explorer 6 and later	Cross platform such as Mac® and UNIX (With JavaScript turned off)	Requires a Microsoft® IIS (ISAPI enabled), Windows® 2003 Web server, Windows® 2008 Web server or Apache™ HTTP Server 2.0+ running Windows®	Works in Locked Down Client Environment or Non-Windows; Security at chart, hierarchical or field level; Not as many features as Rich Client. Intended for regular users.

The information contained in this document is confidential and proprietary to Aquire Solutions, Inc. This information may not be distributed or used for any purpose other than the evaluation of Aquire Solutions, nor may it be disclosed to any party without the prior written consent from Aquire. Copyright © 2001 - 2009 Aquire. All Rights Reserved.

Format	Browser	Client	Server	Criteria for Usage
PluginX (I) Figure 5	Microsoft® Internet Explorer 6 and later	Microsoft®, Windows® XP, Windows® Vista™, or Windows 7, operating system	Requires a Microsoft® IIS (ISAPI enabled), Windows® 2003 Web server, Windows® 2008 Web server or Apache™ HTTP Server 2.0+ running Windows®	Chart level Password Security; Full choices for End User functionality. Intended for all users.
HTML (D) Figure 6	Microsoft® Internet Explorer 6 and later	Cross platform such as UNIX and Mac	Requires a Microsoft® IIS (ISAPI enabled), Windows® 2003 Web server, Windows® 2008 Web server or Apache™ HTTP Server 2.0+ running Windows®	Windows® or Non-Windows locked down Environment; Not as many features as PluginX. Intended for all users.
PDF (D) Figure 7	Free Adobe Acrobat Reader Version 9	Cross platform reader in browser	Requires a Microsoft® IIS (ISAPI enabled), Windows® 2003 Web server, Windows® 2008 Web server. or Apache™ HTTP Server 2.0+ running Windows®	You can print or email document. Intended for all users.
Real-time (I) Figure 8	Microsoft® Internet Explorer 6 and later	Microsoft® Windows® XP, Windows® Vista™, or Windows 7 operating system	Requires Microsoft® IIS (ISAPI enabled), Windows® 2003 Web server, Windows® 2008 Web server,	EChart, rich or thin client, option created from an ODBC connection to an Oracle®, SQL Server2000 or SQL Server 2005 database. Must be published to virtual directory.

The information contained in this document is confidential and proprietary to Aquire Solutions, Inc. This information may not be distributed or used for any purpose other than the evaluation of Aquire Solutions, nor may it be disclosed to any party without the prior written consent from Aquire. Copyright © 2001 - 2009 Aquire. All Rights Reserved.

Format	Browser	Client	Server	Criteria for Usage
			or Apache™ HTTP Server 2.0+ running Windows®, MDAC 2.6 and later, ASP.NET support	Note: Real-time publishing is not available when building charts from multiple data sources.

I=Interactive Charts (includes advanced search, navigation, printing and querying).
 D=Document type charts.

The information contained in this document is confidential and proprietary to Aquire Solutions, Inc. This information may not be distributed or used for any purpose other than the evaluation of Aquire Solutions, nor may it be disclosed to any party without the prior written consent from Aquire. Copyright © 2001 - 2009 Aquire. All Rights Reserved.

EChart Rich Client Topology

EChart Rich Client is recommended for large or secure implementations. It provides fast performance for medium to very large charts and provides field level security and Microsoft® Active Directory authentication.

It is intended for end power users and end standard users.

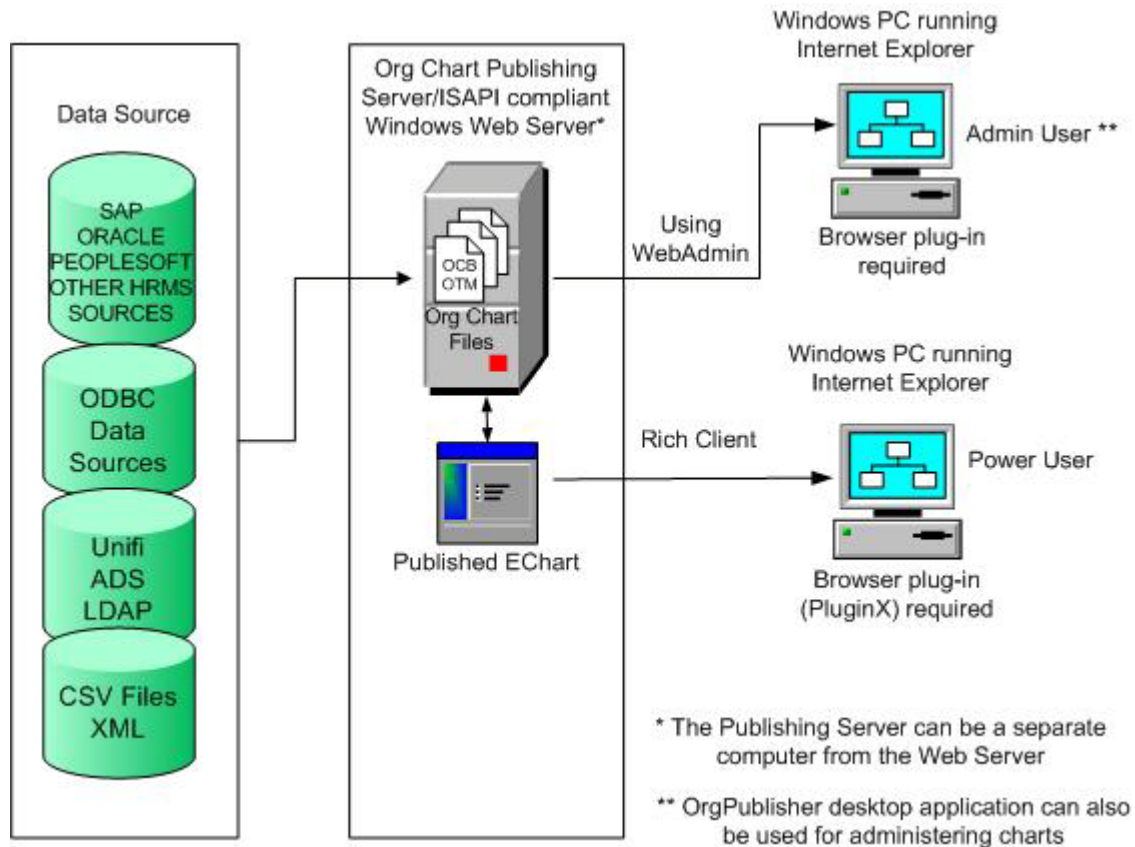


Figure 3

The information contained in this document is confidential and proprietary to Aquire Solutions, Inc. This information may not be distributed or used for any purpose other than the evaluation of Aquire Solutions, nor may it be disclosed to any party without the prior written consent from Aquire. Copyright © 2001 - 2009 Aquire. All Rights Reserved.

EChart Thin Client Topology

EChart Thin Client utilizes the server rather than individual user workstations to process the org chart. The EChart Thin server hardware requirements can vary depending on a number of factors, such as number of records charted, number of custom fields, concurrent users, whether the servers are dedicated to only this function or not, and so on. Ultimately, load testing in the working environment will determine the final configuration.

Thin Client works in Locked Down Client Environment or Non-Windows® Security at chart hierarchical or field level. It does not have as many features as Rich Client.

It is intended for regular users.

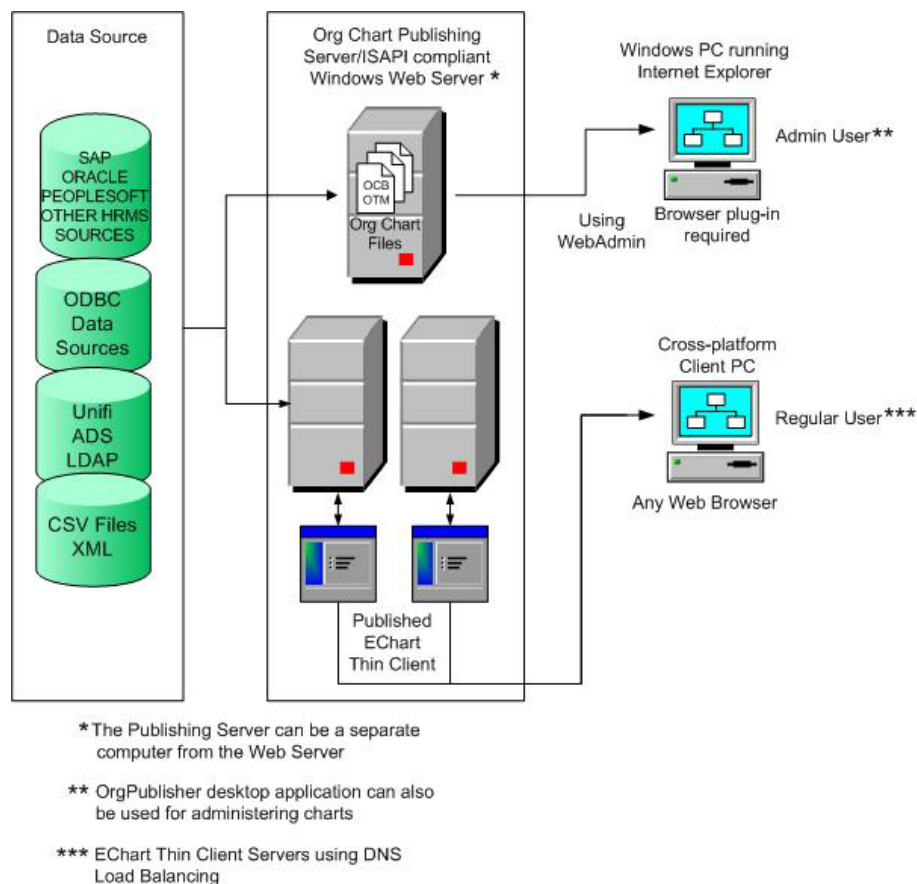


Figure 4

The information contained in this document is confidential and proprietary to Aquire Solutions, Inc. This information may not be distributed or used for any purpose other than the evaluation of Aquire Solutions, nor may it be disclosed to any party without the prior written consent from Aquire. Copyright © 2001 - 2009 Aquire. All Rights Reserved.

EChart Real-time Topology

Real-time charts provide users with immediate access to up-to-date information. Dynamic organizational charts are generated using real-time access for MS SQL, Oracle®, or Microsoft® Access data source, and then published in EChart format.

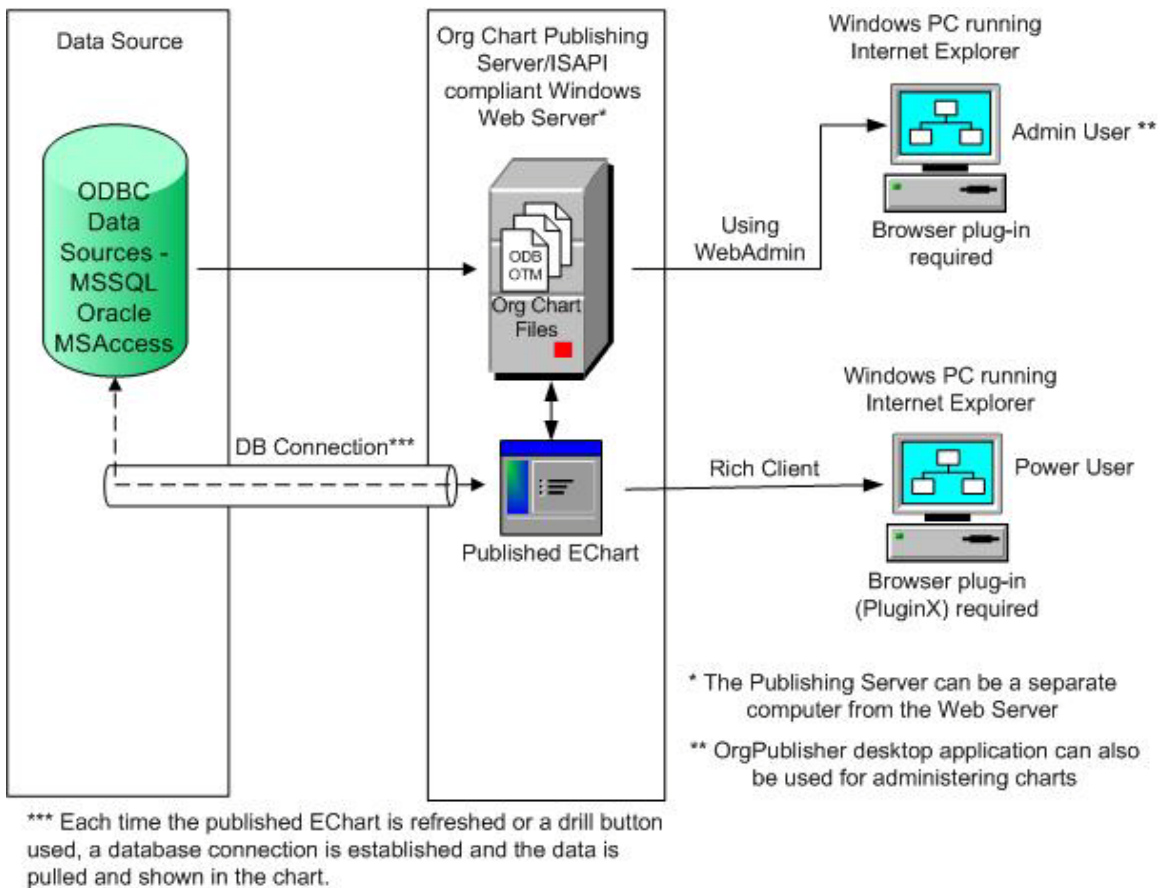


Figure 5

The information contained in this document is confidential and proprietary to Aquire Solutions, Inc. This information may not be distributed or used for any purpose other than the evaluation of Aquire Solutions, nor may it be disclosed to any party without the prior written consent from Aquire. Copyright © 2001 - 2009 Aquire. All Rights Reserved.

PluginX Topology

PluginX provides end users with the richest interactive experience, allowing them to navigate and search the chart, create their own groups, access hotspot links, and provide accessibility to the visually impaired.

PluginX provides chart level Password Security with full choices for user functionality.

It is intended for all users.

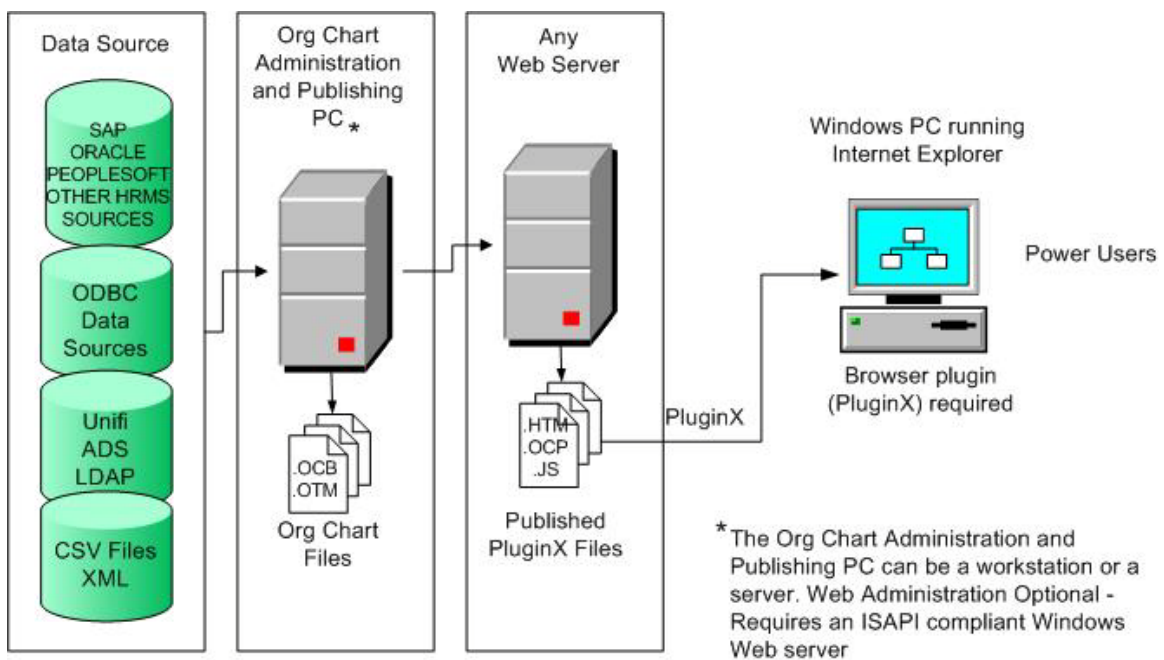


Figure 6

The information contained in this document is confidential and proprietary to Aquire Solutions, Inc. This information may not be distributed or used for any purpose other than the evaluation of Aquire Solutions, nor may it be disclosed to any party without the prior written consent from Aquire. Copyright © 2001 - 2009 Aquire. All Rights Reserved.

HTML Topology

HTML published charts can contain basic interactive elements, such as drilling, hotspots, displayable views, and the email to a group feature.

It operates in a Windows® or Non-Windows locked down environment. This publishing option does not provide as many features as PluginX.

HTML charts are intended for all users.

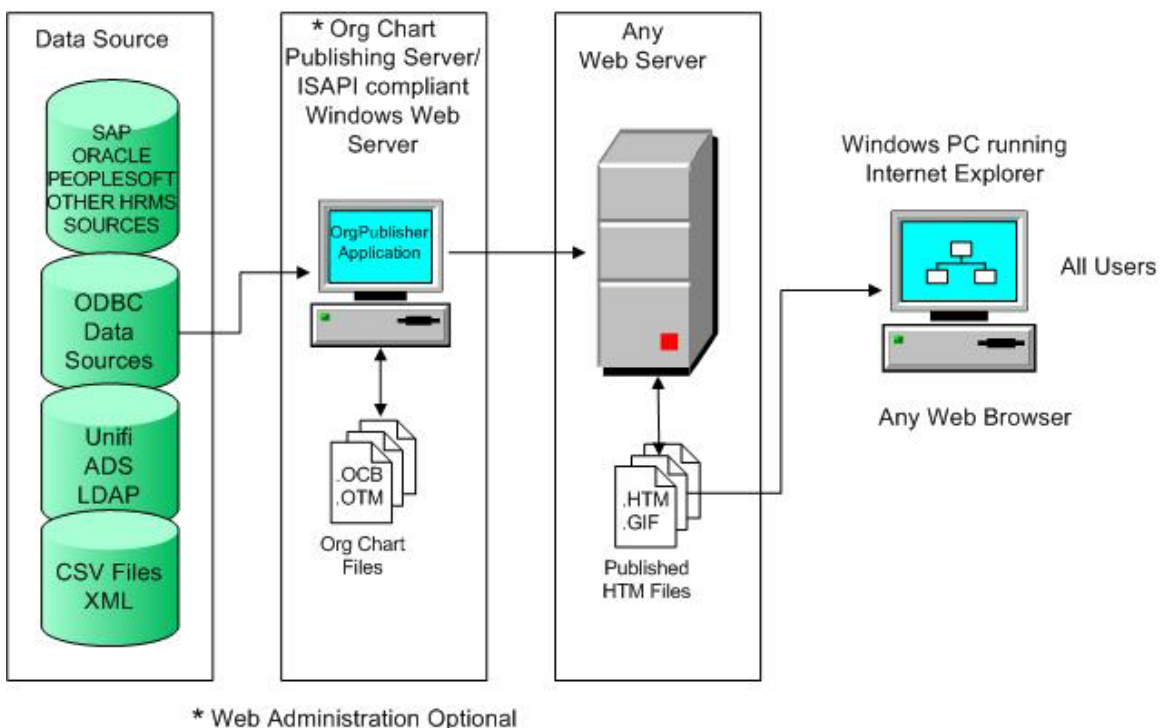


Figure 7

The information contained in this document is confidential and proprietary to Aquire Solutions, Inc. This information may not be distributed or used for any purpose other than the evaluation of Aquire Solutions, nor may it be disclosed to any party without the prior written consent from Aquire. Copyright © 2001 - 2009 Aquire. All Rights Reserved.

PDF Topology

With this publishing option you can choose chart styles, the top of chart box, and print in Book style. In addition, this is the EChart thin client printing option. End users must have the Adobe® Acrobat® Reader® 9 software installed on their PCs.

Documents published in PDF can be printed or e-mailed.

This publishing option is intended for all users.

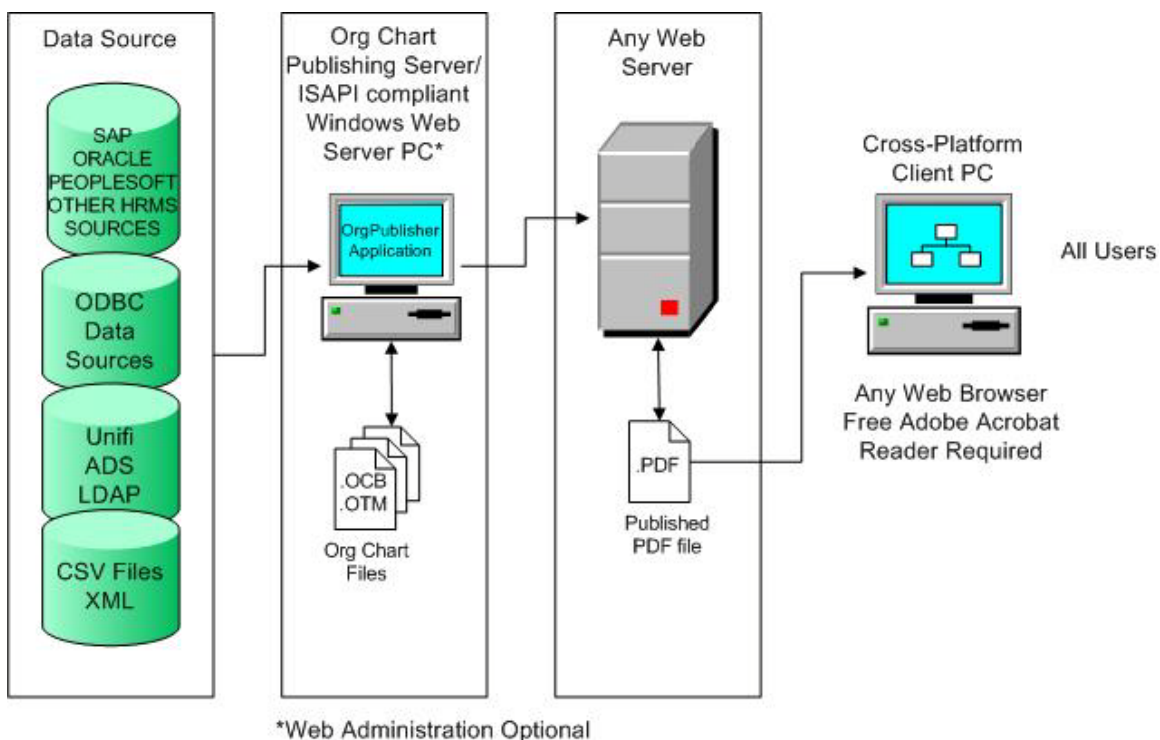


Figure 8

The information contained in this document is confidential and proprietary to Aquire Solutions, Inc. This information may not be distributed or used for any purpose other than the evaluation of Aquire Solutions, nor may it be disclosed to any party without the prior written consent from Aquire. Copyright © 2001 - 2009 Aquire. All Rights Reserved.

Web Administration Server Topology

OrgPublisher works much the same in Web Administration as it does in the desktop. The OrgPublisher Web Administration host runs as an ActiveX control that accesses files and data on a Web server. OrgPublisher with Web Administration is installed to a Web server and is accessed with a Web page. Because all chart files exist on the Web server, you can open any chart from any workstation.

For each server installation, a single folder is created for source charts called **SourceCharts** and another one for published charts called **PublishedCharts**. In addition, an HTML file named **OPAdmin.htm** is created to host the Web Administration client. Microsoft[®] Internet Information Server (IIS) provides security by allowing only chart administrators to access the source directory on the Web server. The IIS account must have full access to the virtual directory containing the remote server DLL. This is necessary because the server DLL reads, writes, and deletes files.

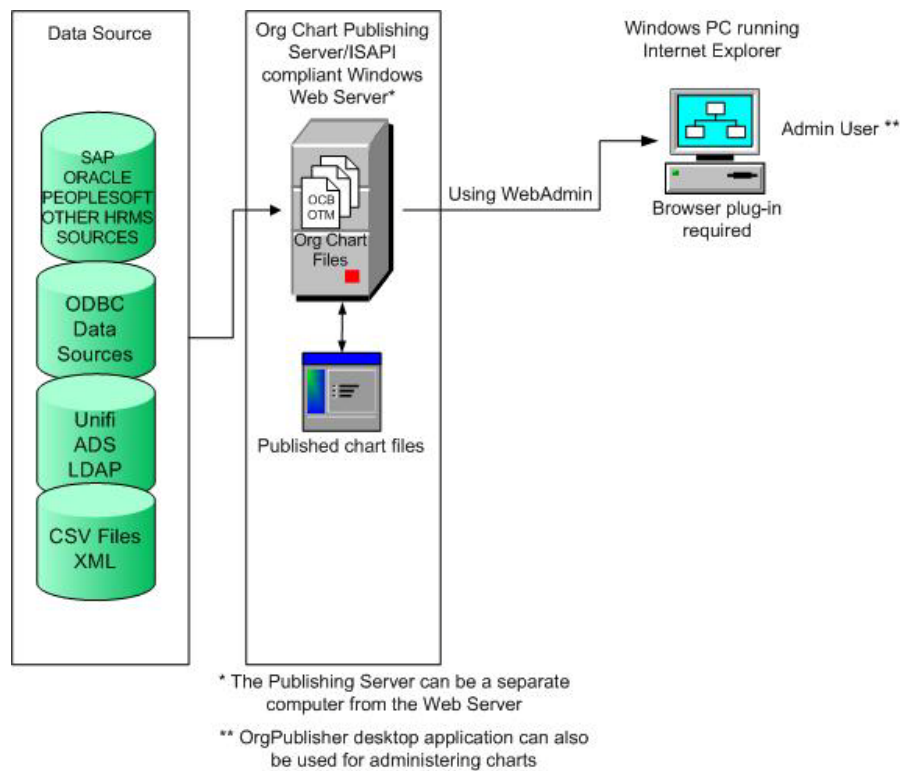


Figure 9

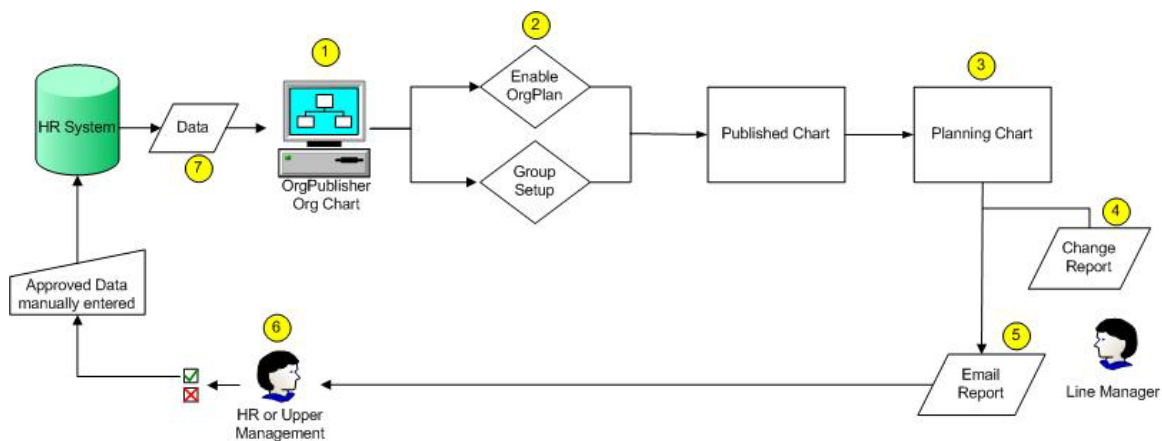
The information contained in this document is confidential and proprietary to Aquire Solutions, Inc. This information may not be distributed or used for any purpose other than the evaluation of Aquire Solutions, nor may it be disclosed to any party without the prior written consent from Aquire. Copyright © 2001 - 2009 Aquire. All Rights Reserved.

OrgPlan

OrgPlan™ provides the ability for selected individuals to create and share organizational models. These charts contain different menus from the standard published charts.

The OrgPlan feature is available in PluginX or EChart Rich Client publishing.

OrgPlan Topology



1. OrgPublisher automatically generates the org chart from the HR system.
2. The OrgPublisher Administrator turns on the OrgPlan feature and creates a Group to determine who will see/use this feature.
3. Line managers click on the Planning button in the published charts and complete their planning graphically with drag and drop/cut and paste.
4. Line managers click on the Report button to review the list and summary of all changes they have just planned.
5. Line managers click on the Send button to e-mail their planning chart and change report to HR or to upper management for approval.
6. Once approved or adjusted by upper management or HR, the change reports in HTML or Excel format are then used as a human readable document so changes can be manually keyed into the HR system
7. OrgPublisher automatically generates the org chart from the HR system which contain the planned changes.

Figure 10

The information contained in this document is confidential and proprietary to Aquire Solutions, Inc. This information may not be distributed or used for any purpose other than the evaluation of Aquire Solutions, nor may it be disclosed to any party without the prior written consent from Aquire. Copyright © 2001 - 2009 Aquire. All Rights Reserved.

Client PC Requirements

Administrator and OrgPlan Users

To publish cross-platform HTML charts that can reside on any Web server, on any platform, to be read by any Web browser, OrgPublisher requires the following:

- Pentium® PC compatible or greater
- Windows® XP, Windows® Vista™, or Windows 7 operating system
- 512 MB of RAM
- 60 MB available hard disk space
- Adequate storage space for charts

Chart Viewing for Power End Users

Browser Requirements for OrgPublisher™ PluginX:

- Pentium® PC compatible or greater
- Windows® XP, Windows® Vista™, or Windows 7 operating system
- 512 MB of RAM
- 60 MB available hard disk space
- Microsoft® Internet Explorer 6 and later for all versions of Windows® mentioned above

Chart Viewing for Standard End Users

Browser Requirements for Thin Client:

- Pentium® PC compatible or greater
- Windows® XP, Windows® Vista™, or Windows 7 operating system
- 256 MB of RAM
- 60 MB available hard disk space
- Microsoft® Internet Explorer 6 and later for all versions of Windows® mentioned above

Optional Server Requirements

EChart Rich/Thin Server Requirements

- Pentium® PC compatible or greater
- A Microsoft® IIS (ISAPI enabled) Windows® XP, Windows® 2003 Web server, Windows® 2008 Web server, or Apache™ HTTP Server 2.0+ running Windows® operating system

The information contained in this document is confidential and proprietary to Aquire Solutions, Inc. This information may not be distributed or used for any purpose other than the evaluation of Aquire Solutions, nor may it be disclosed to any party without the prior written consent from Aquire. Copyright © 2001 - 2009 Aquire. All Rights Reserved.

- A virtual directory with execute permissions for scripts and executables on the Web server
- 60 MB available hard disk space
- 1GB of RAM minimum, depending on chart size

EChart Thin Client utilizes the server rather than individual user workstations to process the org chart. The EChart Thin server hardware requirements can vary depending on a number of factors, such as number of records charted, number of custom fields, concurrent users, whether the servers are dedicated to only this function or not, and so on. Ultimately, load testing in the working environment will determine the final configuration.

The following table lists recommendations that can serve as a starting point for estimating hardware requirements for Thin Client.

EChart Thin Client Number of Records	Dual Load Balanced Server Processor	GHz	Memory	Dedicated vs Shared Server Memory
up to 1000	P4	2	512MB	1GB
1001 to 5000	P4	2.5 – 3	1GB	1.5GB
5001 to 15000	P4	3	1GB	1.5GB
15001 to 25000	Dual P4	3	2GB	2GB
25000 and up	Dual P4 Hyper Threaded	3	2GB	2GB

The information contained in this document is confidential and proprietary to Aquire Solutions, Inc. This information may not be distributed or used for any purpose other than the evaluation of Aquire Solutions, nor may it be disclosed to any party without the prior written consent from Aquire. Copyright © 2001 - 2009 Aquire. All Rights Reserved.

Web Admin Server Requirements

- Pentium® PC compatible or greater
- A Microsoft® IIS (ISAPI enabled), Windows® XP, Windows® 2003 Web server, Windows® 2008 Web server or Apache™ HTTP Server 2.0+ running Windows® operating system
- A virtual directory with execute permissions for scripts and executables on the Web server
- 60 MB available hard disk space
- 1GB MB of RAM

The information contained in this document is confidential and proprietary to Aquire Solutions, Inc. This information may not be distributed or used for any purpose other than the evaluation of Aquire Solutions, nor may it be disclosed to any party without the prior written consent from Aquire. Copyright © 2001 - 2009 Aquire. All Rights Reserved.