

OrgPublisher Hotspots



OrgPublisher 10 Training

Copyright 2002 – 2011 All Rights Reserved by Aquire

OrgPublisher™, OrgPublisher Premier™, Unifi™, Mobile OrgPublisher™, and Pocket OrgPublisher™ are trademarks of Aquire in the United States and other countries.

Microsoft®, Windows®, Internet Explorer, Pocket PC 2002 platform, and ActiveSync®, are either registered trademarks or trademarks of Microsoft Corporation in the United States and other countries.

Netscape® and the Netscape N and Ship's Wheel logos are registered trademarks of Netscape Communications Corporation in the United States and other countries.

Blackberry™, RIM850™, RIM857™, RIM950™, and RIM957™ are either registered trademarks or trademarks of Research in Motion Limited (RIM) in Canada and other countries.

Palm™, Palm OS®, and HotSync® are either registered trademarks or trademarks of Palm, Inc. in the United States and other countries.

JAWS® for Windows is a registered trademark of Freedom Scientific in the United States and other countries.

SAP® and mySAP™ are trademarks or registered trademarks of SAP AG in Germany and in several other countries all over the world.



Table of Contents

- 1 Hotspots..... 1
 - 1.1 Insert Hotspots..... 1
 - 1.2 Test the Hotspot..... 3
 - 1.3 Setting a Global Hotspot..... 3
- 2 Smart Links..... 5

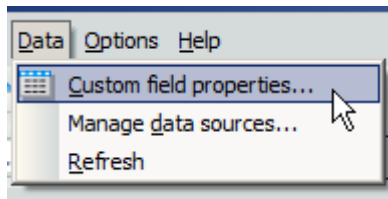
1 Hotspots

The OrgPublisher Hotspot feature creates "clickable" links inside an org chart. Hotspots typically link to another web page, usually with an **htm** file extension. You can use hotspots to link to any file type that your web browser recognizes and displays.

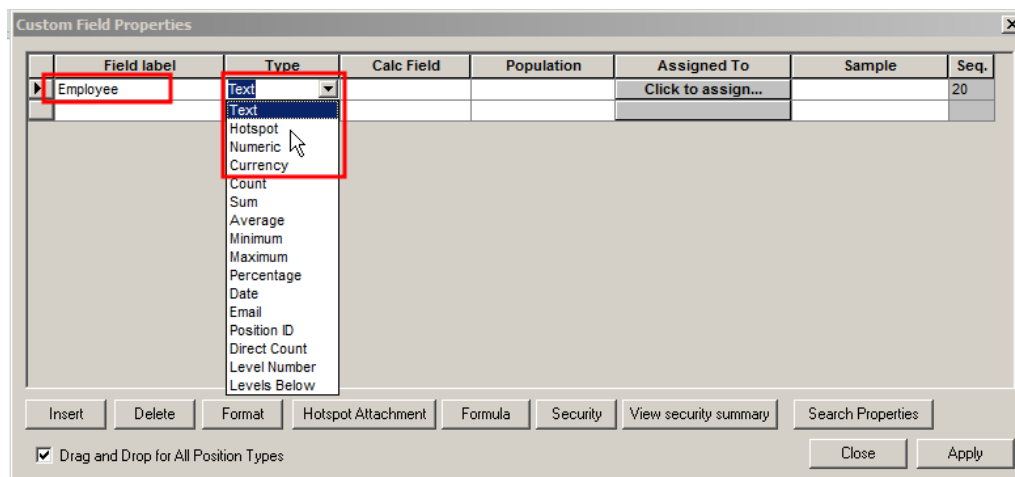
- Hotspots can be created for box titles, job titles, position types and custom fields.
- Hotspot data is passed in field 20 or higher.
- OrgPublisher stores a base URL for each Hotspot field in the template file (**.otm**).
- Hotspots are active when displayed in the Profile View.

1.1 Insert Hotspots

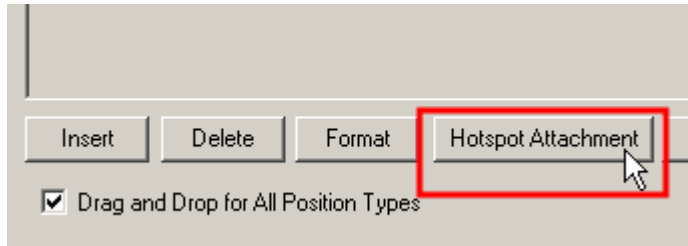
1. Ensure that your data source contains the hotspot information required, and determine which custom fields will have hotspots. Open the data source chart in OrgPublisher. Select **Data** from the menu bar, then **Custom Field Properties** from the menu.



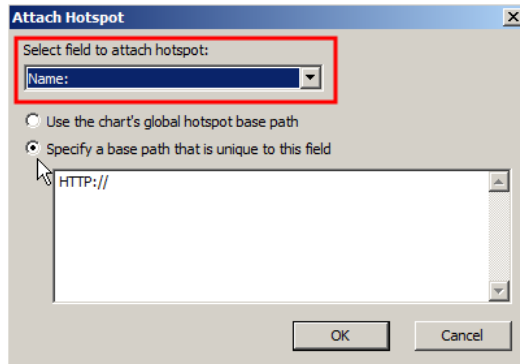
2. Locate the first field containing hotspot data. Type in your own descriptive name in the **Field label** column. Use the drop-down arrow to change the **Type** field to **Hotspot**.



3. Select Hotspot Attachment



4. Select the field that when clicked will launch the hotspot link.



5. If all Hotspots in the chart contain the same global path, select to Use the chart's global hotspot base path. (See Setting a Global Hotspot later in this document). If this Hotspot has a unique path, then select Specify a base path that is unique to this field.

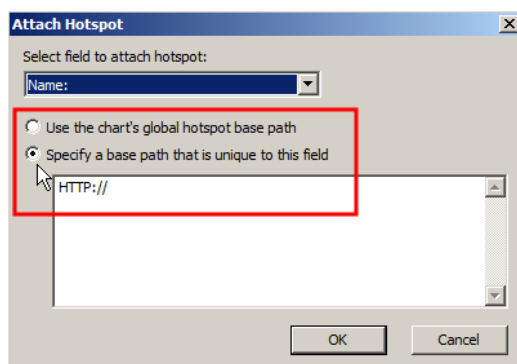
Type in the path. For example:

//servername/CompanyDocuments/

OR

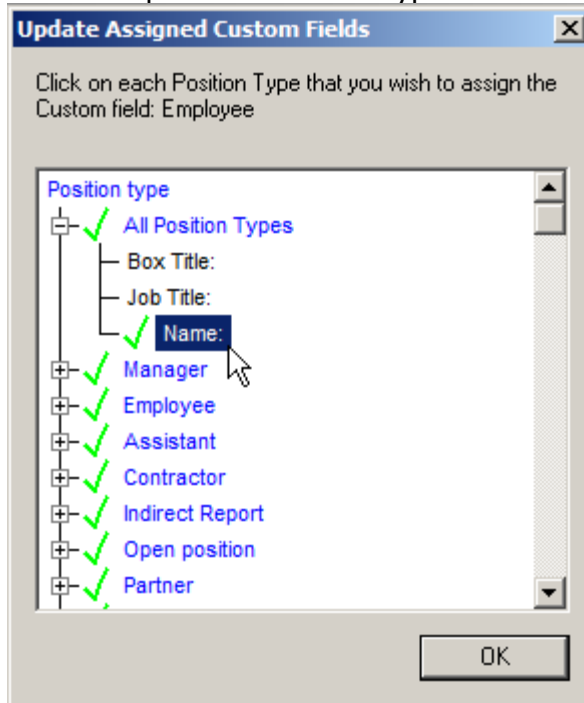
http://www.companysite.com/ CompanyDocuments/

Please Note: Using mapped drive letters is not recommended.



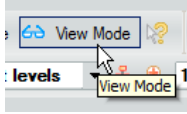
6. Click OK.
7. In the Assigned To column, select <Click to display>. The Update Assigned Custom Fields dialog opens.

- You can expand the Position Type and fields by clicking on the plus sign to the left.

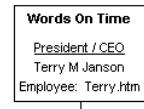


- Select the Position Types to use this hotspot, and click <OK> to accept your selections and close the dialog.

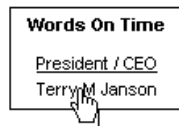
1.2 Test the Hotspot

- In Build mode, the chart displays the hotspot label and data.
Please note: If you click on Build mode and your chart is a .odb or .odbx file type, this will break the connection to your data source. Read more on this topic in the *Bringing in the Data* manual.
- In View mode, your Hotspot is active. 
- Click on the field in the box to test the Hotspot link.

Words On Time



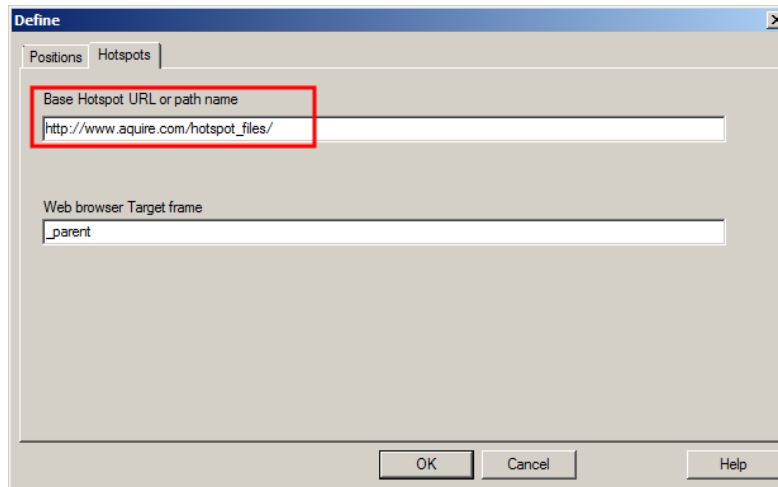
Words On Time



1.3 Setting a Global Hotspot

- If all Hotspots have the same path, you can set a global base path that is applied to all Hotspots. When attaching the Hotspot (as noted earlier), you would not type in the base path.
- Select Edit from the menu bar, then Define from the pull-down list.
- Select the Hotspots tab.

4. Type in the base URL in the Base Hotspot URL or path name field. For example:
//servername/CompanyDocuments/
 OR
http://www.companysite.com/ CompanyDocuments/



Please Note: Using mapped drive letters is not recommended.

5. Click <OK> to save this information and close the dialog.

Please Note: OrgPublisher can store one base URL per chart in the Define dialog of the Hotspot Wizard.

6. Use _parent in the Web browser Target frame field if frames are not used so that hotspot information will not launch another occurrence of the web browser.

2 Smart Links

Smart Links provide access to multiple Hotspots assigned to a single field. End users can navigate/access multiple applications or web pages from within a chart, leveraging existing intranet applications. Smart Links allow “drilling down” into details regarding people, jobs, and departments.

1. Create two Hotspots and assign them to the same data field.
2. In a published chart, when the user clicks on a field with multiple hotspots assigned, the Smart Link list displays.
3. The user selects the preferred option.

